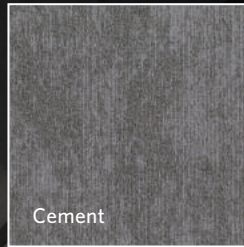
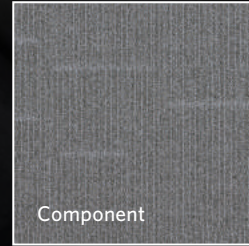
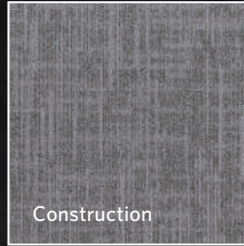
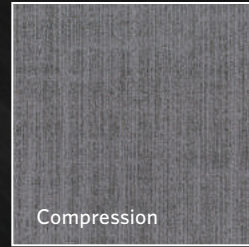
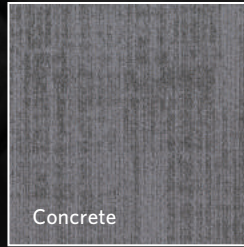


BUILDING BLOCKS C 2.0

Concrete / Compression
Construction / Component
Cement



Milliken®

Building Blocks C 2.0 Pattern



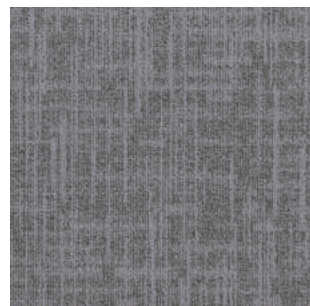
Concrete
CON79-174 DIM GREY



Compression
CPR79-174 DIM GREY



Cement
CEM79-174 DIM GREY



Construction
COS79-174 DIM GREY



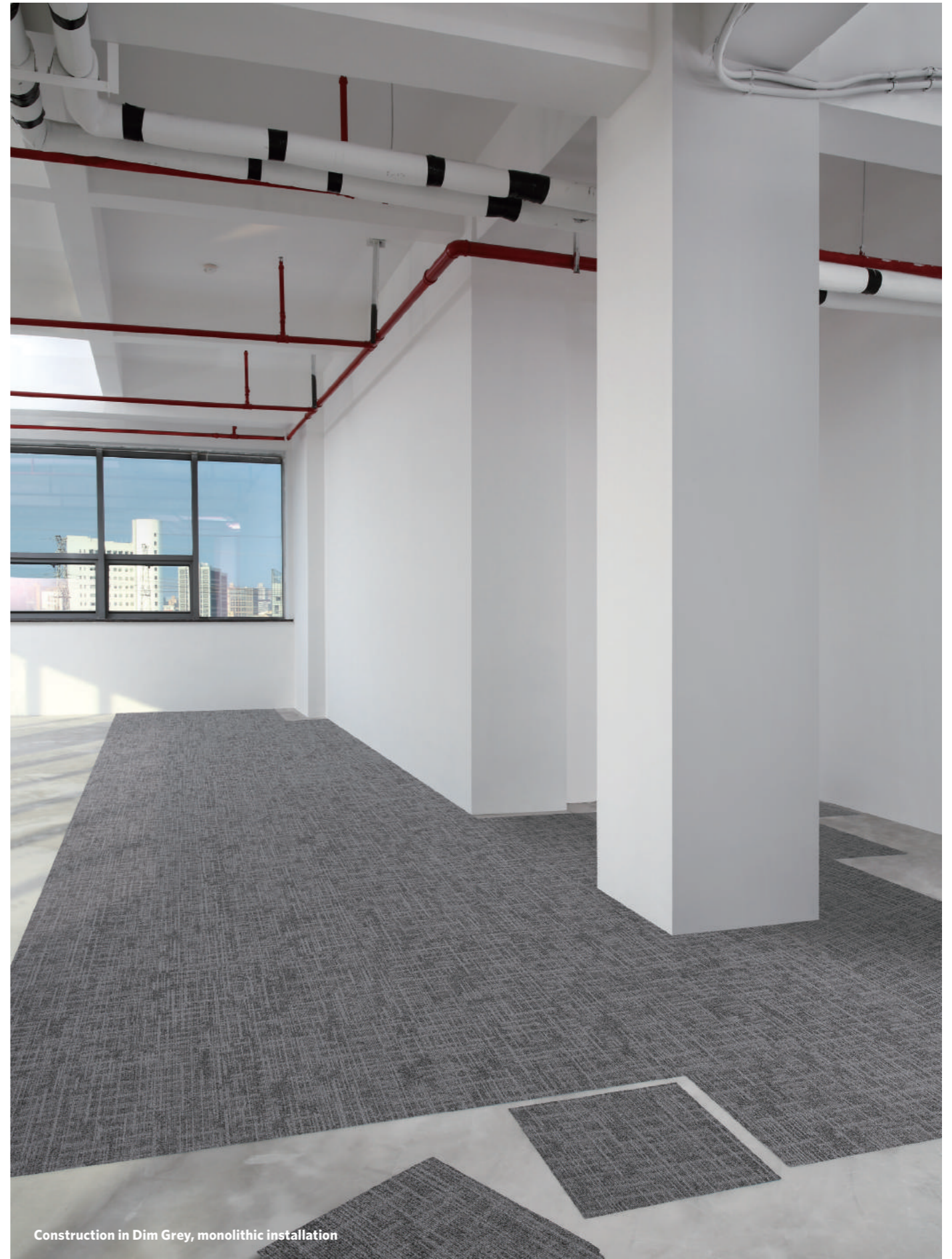
Component
CPN79-174 DIM GREY



Concrete in Dim Grey, monolithic installation



Compression in Dim Grey, monolithic installation



Construction in Dim Grey, monolithic installation



Construction in Pistachio Grey, monolithic installation



Component in Pistachio Grey (left), Construction in Ash Grey(right), monolithic installation, Backstitch in Loop(middle), ashlar installation



Component in Zest Yellow, monolithic installation



Concrete in Flint Grey and Zest Yellow, monolithic installation



Construction in Slate Grey and Electric Blue, monolithic installation



Construction, Concrete and Compression in Ash Grey, monolithic installation



Concrete and Compression in Slate Grey, monolithic installation



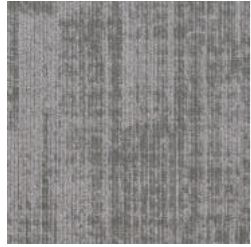
Cement in Coal Grey, Point 3 in Giant Sequoia with Lava, monolithic installation



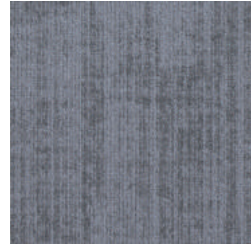
Compression in Coal Grey, Point 3 in Betula with Plywood, monolithic installation

COLORLINE

Concrete



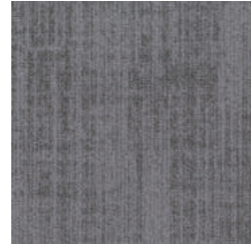
CON13-180 ASH GREY



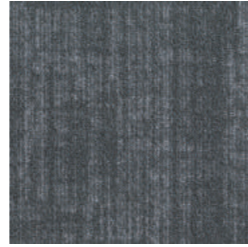
CON154-180 ANCHOR GREY



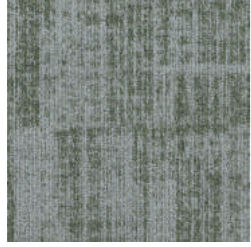
CON118-174 FLINT GREY



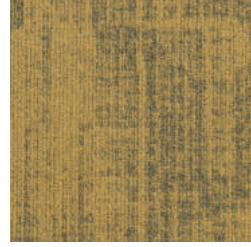
CON79-174 DIM GREY



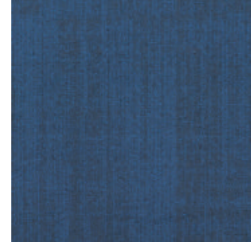
CON118-106 SLATE GREY



CON141-180 PISTACHIO GREY



CON118-231 ZEST YELLOW



CON123-19 ELECTRIC BLUE



CON119-154 COAL GREY

Compression



CPR13-180 ASH GREY



CPR154-180 ANCHOR GREY



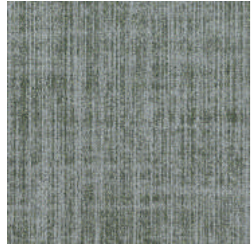
CPR118-174 FLINT GREY



CPR79-174 DIM GREY



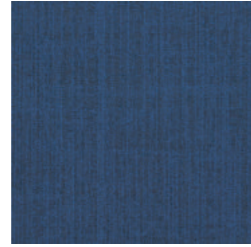
CPR118-106 SLATE GREY



CPR141-180 PISTACHIO GREY



CPR118-231 ZEST YELLOW



CPR123-19 ELECTRIC BLUE

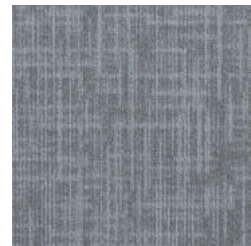


CPR119-154 COAL GREY

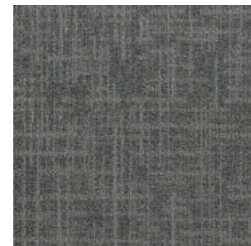
Construction



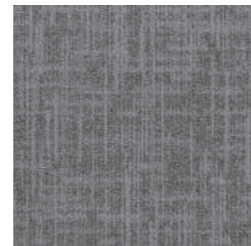
COS13-180 ASH GREY



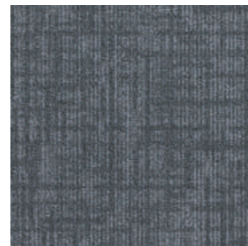
COS154-180 ANCHOR GREY



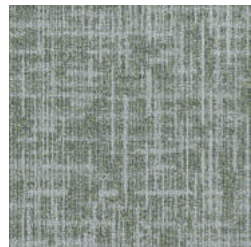
COS118-174 FLINT GREY



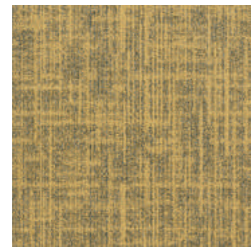
COS79-174 DIM GREY



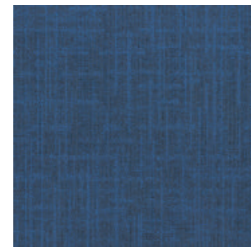
COS118-106 SLATE GREY



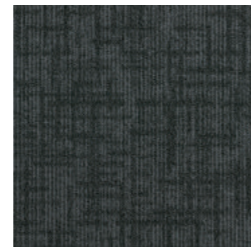
COS141-180 PISTACHIO GREY



COS118-231 ZEST YELLOW

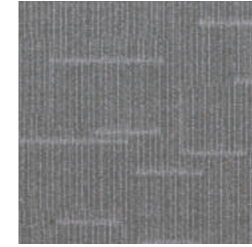


COS123-19 ELECTRIC BLUE

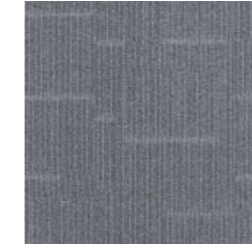


COS119-154 COAL GREY

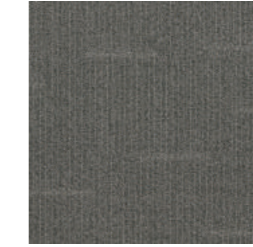
Component



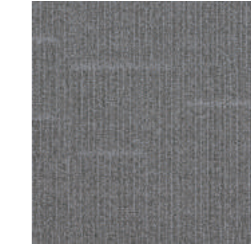
CPN13-180 ASH GREY



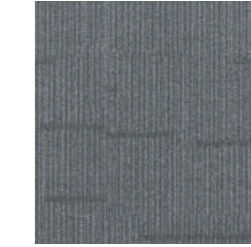
CPN154-180 ANCHOR GREY



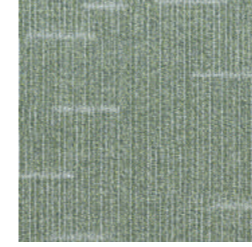
CPN118-174 FLINT GREY



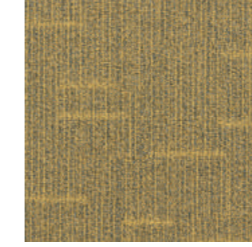
CPN79-174 DIM GREY



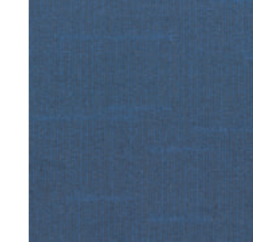
CPN118-106 SLATE GREY



CPN141-180 PISTACHIO GREY



CPN118-231 ZEST YELLOW

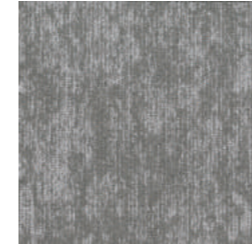


CPN123-19 ELECTRIC BLUE

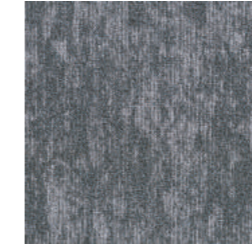


CPN119-154 COAL GREY

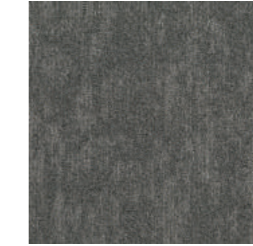
Cement



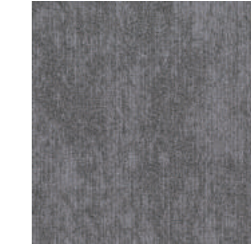
CEM13-180 ASH GREY



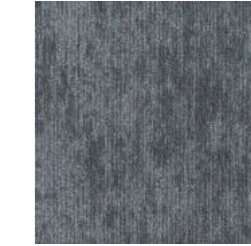
CEM154-180 ANCHOR GREY



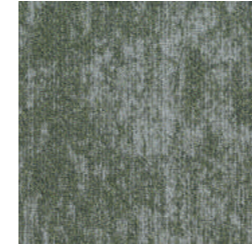
CEM118-174 FLINT GREY



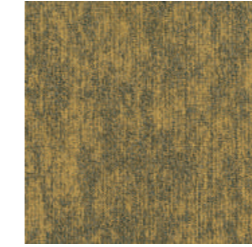
CEM79-174 DIM GREY



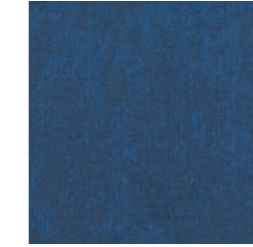
CEM118-106 SLATE GREY



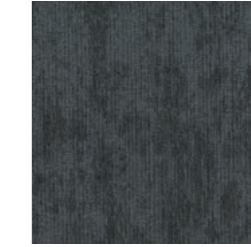
CEM141-180 PISTACHIO GREY



CEM118-231 ZEST YELLOW



CEM123-19 ELECTRIC BLUE



CEM119-154 COAL GREY



BUILDING BLOCKS C 2.0

Concrete / Compression / Construction
Component / Cement

SPECIFICATION

Construction - Tufted, Textured Loop

Tile Size - 50cm X 50cm (19.7" X 19.7")

Face Fiber - 100% Milliken Certified Nylon

Dye Method - Solution Dyed

Standard Backing - PVC-Free WellBAC™ Function
Available with TractionBack®

Nominal Total Thickness - 5.3 mm AVG.
5.5 mm AVG. (Construction)

Flammability - ≥ 0.45 (Class I)

Texture Appearance Retention Rating (TARR) - Heavy

Indoor Air Quality - CRI Green Label Plus™

GLP3200, Carpet Category 14X

技术指标

结构 - 簇绒织造圈绒结构

产品尺寸 - 50厘米 X 50厘米 (19.7 X 19.7英寸)

表层纤维 - 100% 美利肯认证尼龙

染色技术 - 原液染色

标准底垫 - 不含PVC之 WellBAC™ Function弹性底背
可选装TractionBack® 免胶

额定总厚度 - 5.3 毫米 平均
5.5 毫米 平均 (Construction)

阻燃性 - ≥ 0.45 (一级)

外观保持等级 (TARR) - 频繁商业使用

室内空气质量 CRI Green Label Plus™ - GLP3200, 地毯类别 14X

Installation Method:

安装方式



Monolithic
同一方向安装

TractionBack®

Simplify your modular installation with Milliken's patented TractionBack®, an innovative backing system that is faster, more cost efficient, and environmentally superior to wet adhesives and peel-and-stick carpet tile.

www.millikencarpet.com



Declare.

China
North & North West &
South West Of China
T +86 10 6465 1206
T +86 133 0101 8460
South of China &
HK & Macau
T +86 181 1743 0032
East & Central of China
T +86 21 6145 1758

India
Bangalore
T +91 98408 98963
Delhi
T +91 95010 11800
Hyderabad
T +91 99631 64059
Mumbai
T +91 98926 00362

Rest of Asia
Manila
T +63 915 816 7127
Seoul
T +82 2 3783 0747
Singapore
T +65 6593 1301
Tokyo
T +81 3 5203 8406
Jakarta
T +6221 2960 7222