



FORMWORK



**FORMWORK 2.0**

*Milliken*<sup>®</sup>





## INSPIRED. INSPIRING.

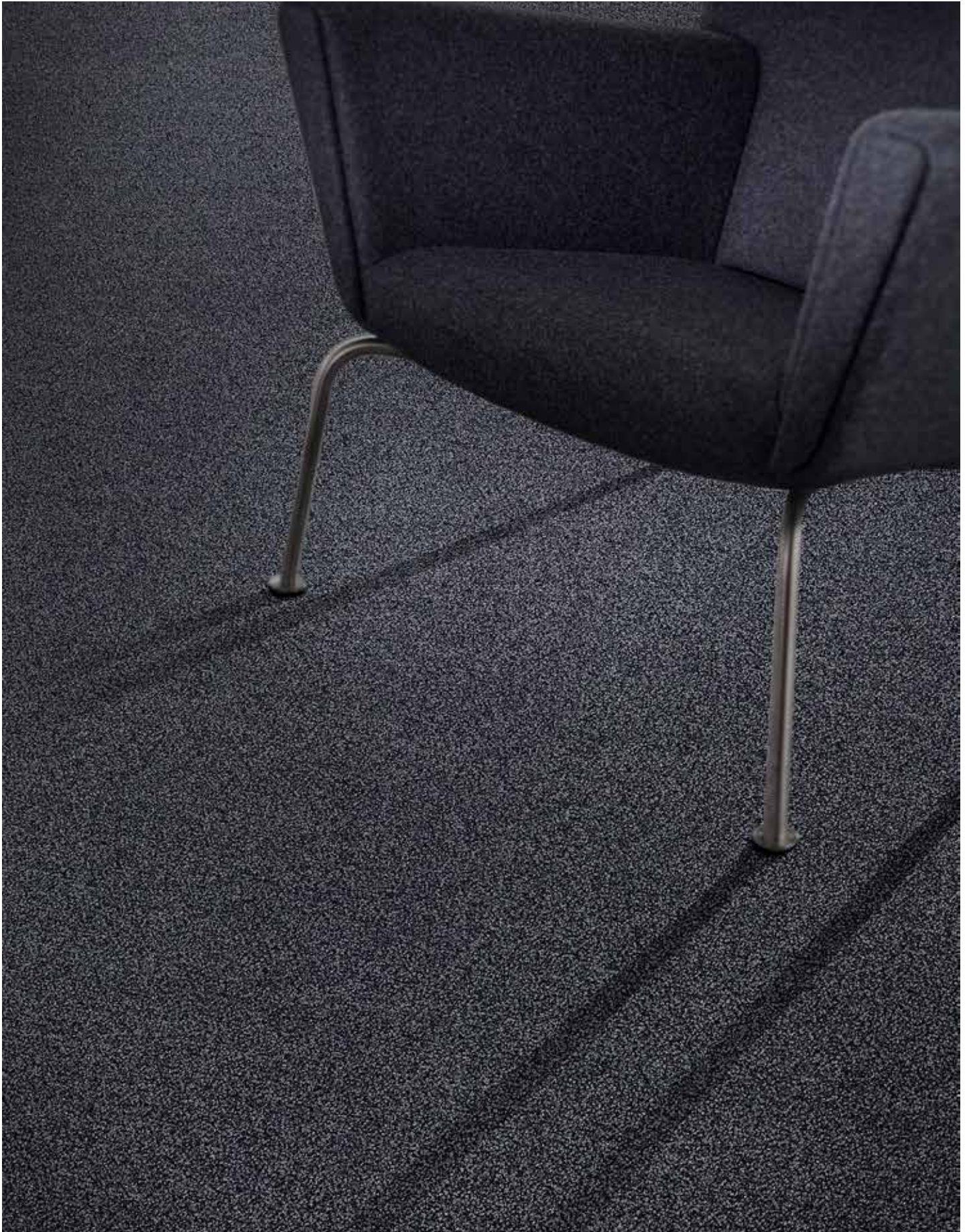
### 源于灵感 智启灵感

The simplicity of form truly defines function. Refind to the elemental, the structure is both clever and quiet. The mood adapts and configures to those who occupy it becoming a place of making and doing or just one of reflection and peace. Offering understated simplicity and texture in a sophisticated palette, Formwork 2.0 provides a practical and timeless coordinate to a wide selection of Milliken collections globally. The functional modular tile provides a full range of solutions. It can be used as a modern, full-field solid, define circulation or act as a transition between patterns.



Formwork in Gable, Bargello in Thread Count, monolithic installation



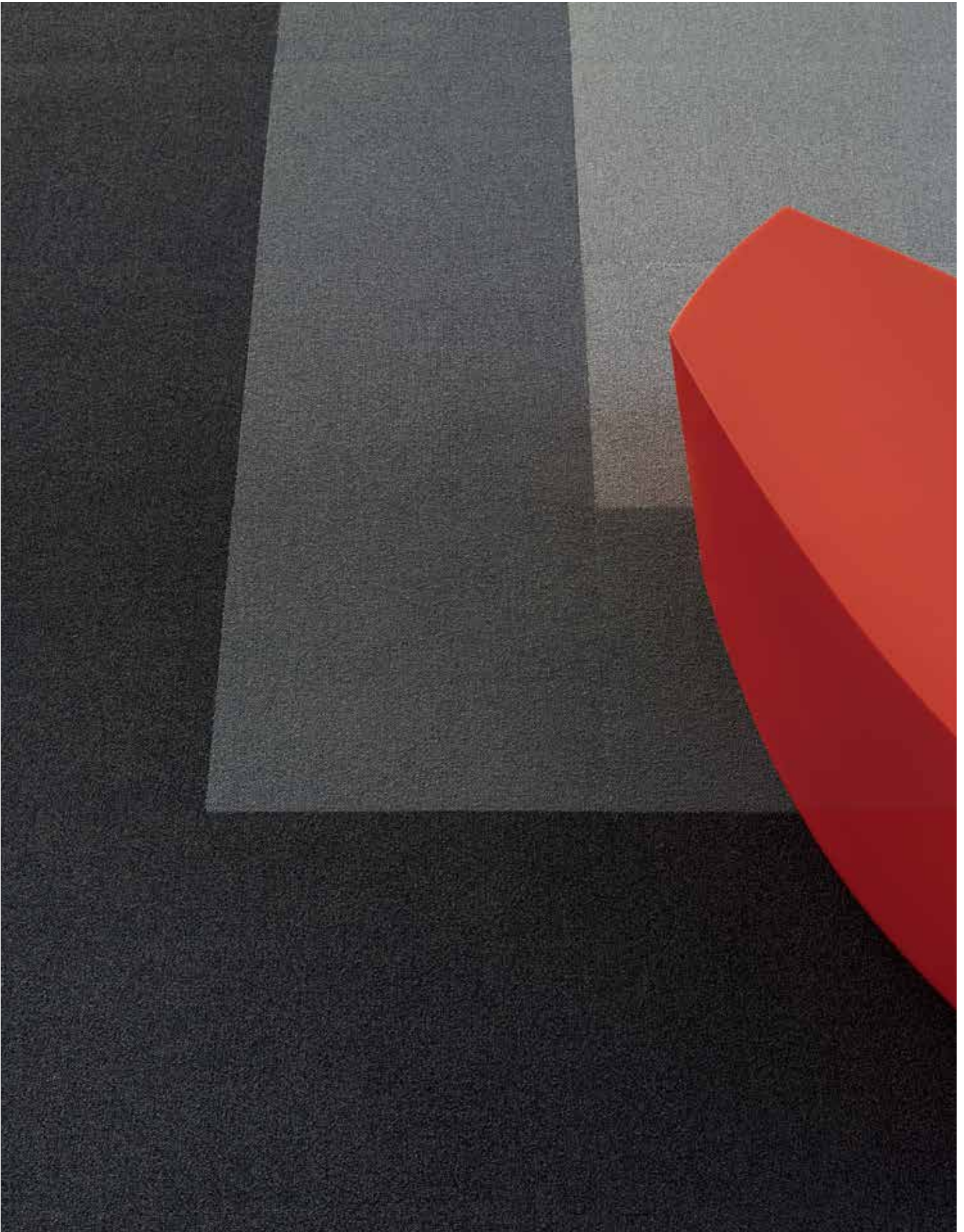


Formwork in Gable, monolithic installation





Formwork in Pitch, Pillar and Aluminum, monolithic installation



Formwork in Pitch, Pillar and Aluminum, monolithic installation



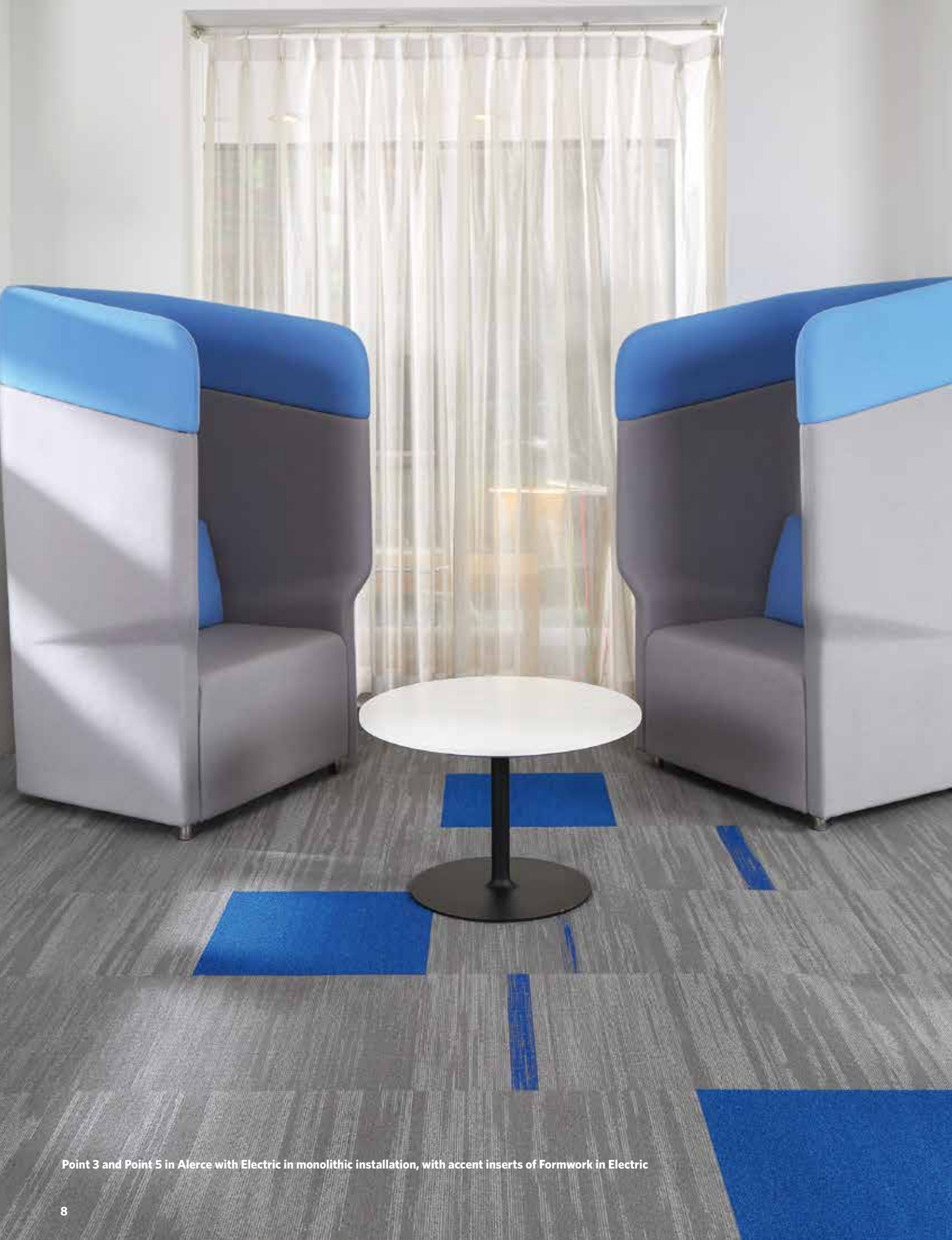


Point 3 in Black Willow with Pitch, Betula with Plywood and Formwork in Plywood, Steel, Slab, Concrete and Pitch, monolithic installation



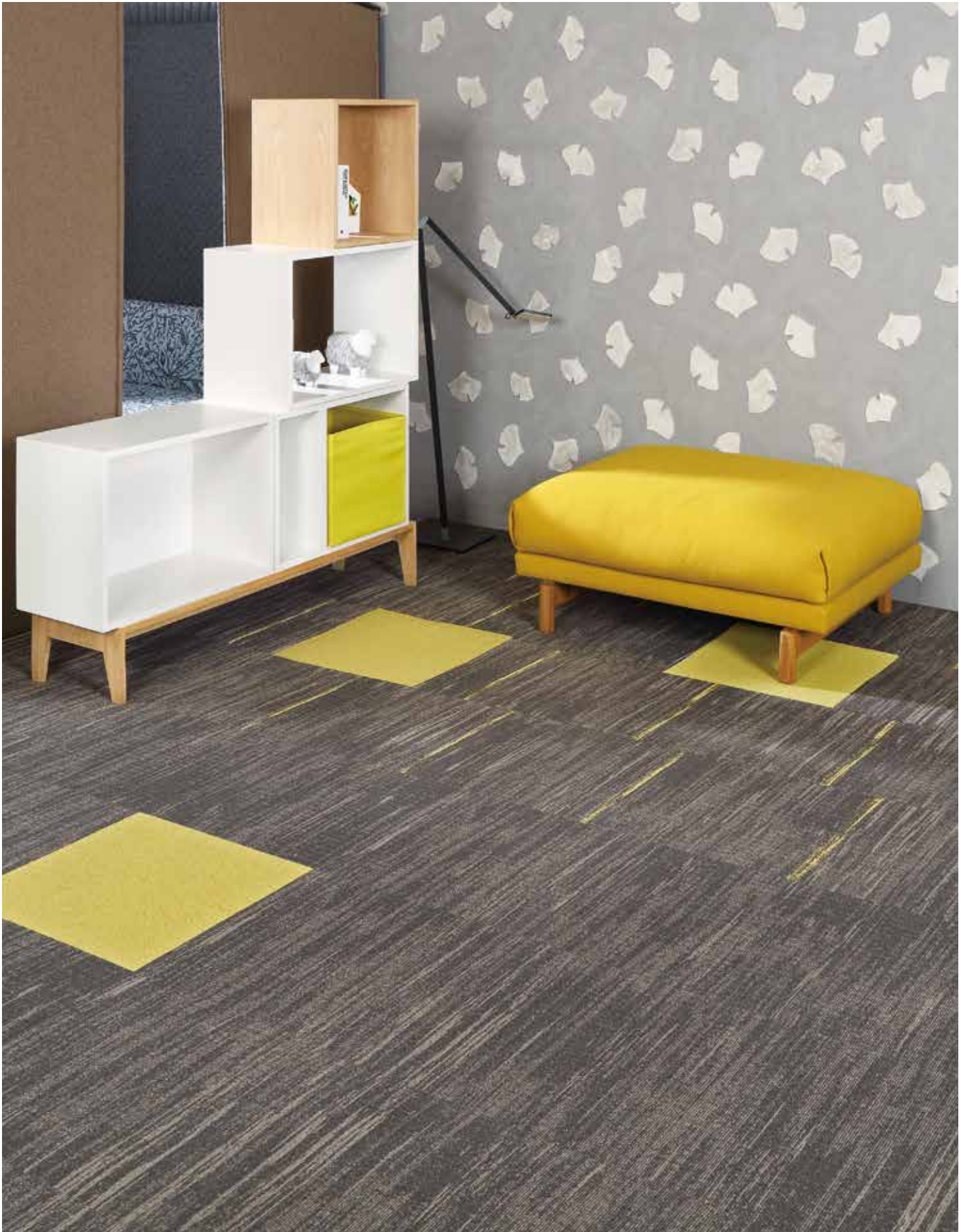


Formwork in Concrete and Aida in Embroidery, monolithic installation



Point 3 and Point 5 in Alerce with Electric in monolithic installation, with accent inserts of Formwork in Electric





Point 3 in Royal Oak with Zest and Royal Oak in monolithic installation, with accent inserts of Formwork in Zest



# COLORLINE



FWK121 PLYWOOD



FWK122 PIER



FWK44 TIMBER



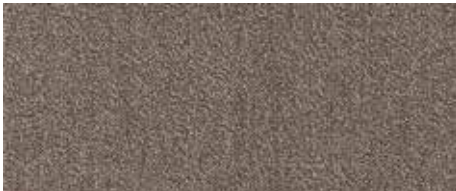
FWK124 ARCHITRAVE



FWK145 AXIAL



FWK120 FOUNDATION



FWK94 WAINSCOT



FWK59 RENDER



FWK178 STRUCTURE



FWK144 ALUMINUM



FWK153 STEEL



FWK97 BEAM



FWK174 SLAB



FWK13 PILLAR



FWK5 MOLDS



FWK68 CONCRETE



FWK119 GABLE



FWK27 PITCH





FWK105-135 SAFFRON \*



FWK147 LAVA \*



FWK137 BLOSSOM



FWK128 HARVEST



FWK169 SASH



FWK232 MAUVE



FWK102 MEZZANINE



FWK169-109 MAROON



FWK66 EAVES



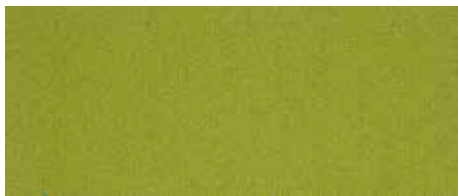
FWK105 ZEST \*



FWK157 AEGEAN



FWK159 CAPRI



FWK62 CHARTREUSE \*



FWK125 TEAL



FWK183 COBALT



FWK103-141 PISTACHIO



FWK51 ADMIRAL



FWK159-183 ELECTRIC

\* Recommended for borders and accents installation only.  
建议围边或作为小范围跳色使用。





# FORMWORK 2.0

## SPECIFICATION

**Construction** - Tufted, Textured Loop

**Tile Size** - 50cm X 50cm  
25cm X 1 m

**Face Fiber** - 100% Milliken Certified Nylon

**Dye Method** - Solution Dyed

**Standard Backing** - PVC-Free WellBAC™ Comfort  
PVC-Free WellBAC™ Function  
Available with TractionBack®

**Nominal Total Thickness** - 8.3 mm AVG.  
5.8 mm AVG.

**Flammability** - ≥ 0.45 (Class I)

**Texture Appearance Retention Rating (TARR)** - Severe  
Heavy

**Indoor Air Quality - CRI Green Label Plus™**

GLP100130, Carpet Category 13X

GLP3200, Carpet Category 14X

## 技术指标

**结构** - 簇绒织造圈绒结构

**产品尺寸** - 50 厘米 X 50 厘米  
25 厘米 X 1 米

**表层纤维** - 100% 美利肯认证尼龙

**染色技术** - 原液染色

**标准底垫** - 不含 PVC 之 WellBAC™ Comfort 舒适软底  
不含 PVC 之 WellBAC™ Function 弹性底背  
可选装 TractionBack® 免胶

**额定总厚度** - 8.3 毫米 平均  
5.8 毫米 平均

**阻燃性** - ≥ 0.45 (一级)

**外观保持等级 (TARR)** - 重度商业使用  
频繁商业使用

**室内空气质量 CRI Green Label Plus™** - GLP100130, 地毯类别 13X  
GLP3200, 地毯类别 14X

## Installation Method 安装方式:



**Monolithic**  
同一方向安装



**Planks**  
板条安装

## TractionBack®

Simplify your modular installation with Milliken's patented TractionBack®, an innovative backing system that is faster, more cost efficient, and environmentally superior to wet adhesives and peel-and-stick carpet tile.

[www.millikencarpet.com](http://www.millikencarpet.com)



# Declare.

## China

**North & North West &  
South West Of China**

T +86 10 6465 1206

T +86 133 0101 8460

**South of China &  
HK & Macau**

T +86 181 1743 0032

**East & Central of China**

T +86 21 6145 1758

## India

**Bangalore**

T +91 98408 98963

**Delhi**

T +91 95010 11800

**Hyderabad**

T +91 99631 64059

**Mumbai**

T +91 98926 00362

## Rest of Asia

**Manila**

T +63 915 816 7127

**Seoul**

T +82 2 3783 0747

**Singapore**

T +65 6593 1301

**Tokyo**

T +81 3 5203 8406

**Jakarta**

T +62 2129 6072 22

