

HUES 2.0

Milliken



HUES 2.0

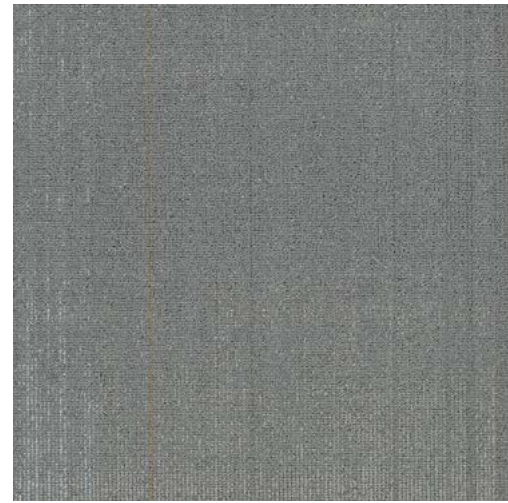
Color plays an integral role in defining the overall theme of any given space. Through the deliberate placement of color vs. monochrome a dichotomy of balance in the space can be achieved.

Hues 2.0 offers brighter colors that coordinates with "Saturates" in conjunction with subtle neutral "Shades" to create a color balance within the space. Saturates can be used to lead people through different areas, with dynamic installations adding style to the scheme. It can also be used as color blocking in a zone to visually differentiate the function of the space.

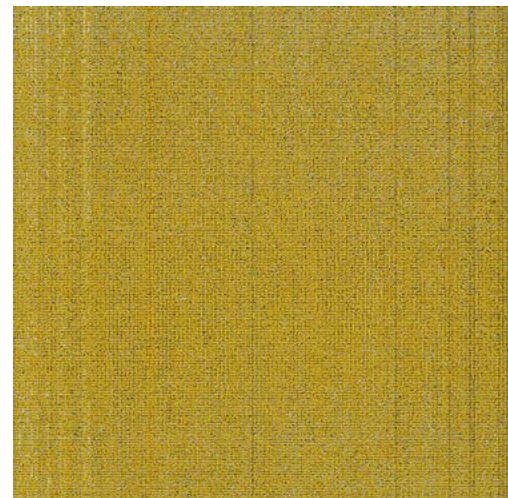
HUES 2.0: Pattern Explained

Hues offers brighter colors that coordinates with "Saturates" in conjunction with subtle neutral "Shades" to create a color balance within the space.

SHADES - SUN
The Neutral Option



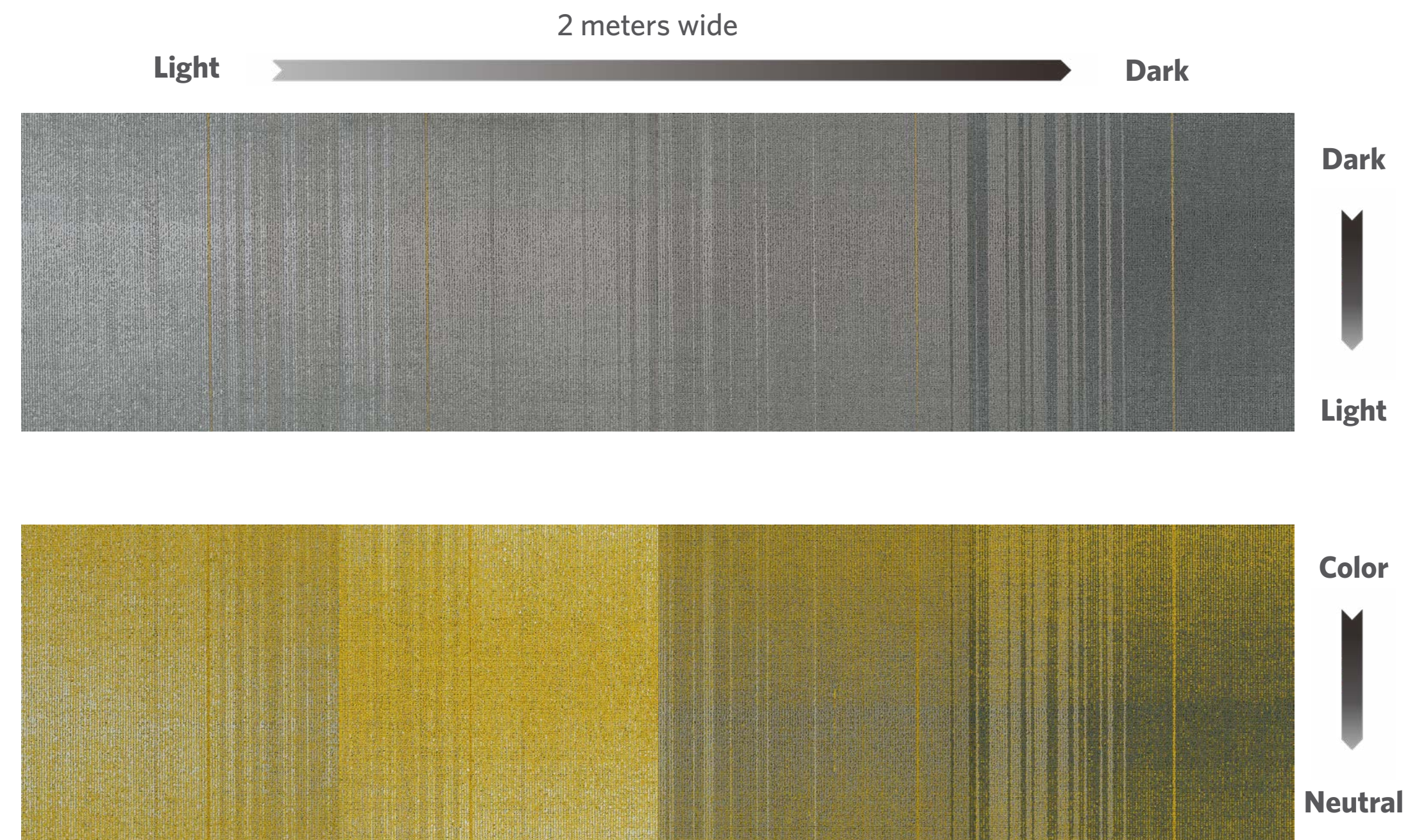
SATURATES - SUN
The Bright Option



Gradation Explained

The 2 meters wide width of the pattern has a gradation horizontally and vertically. Every tile captures a different area of the gradation, allowing the installation for a complete random effect.

* Every tile will be slightly different due to the nature of the random gradation. No tile will be the same.



9 Tile Layout



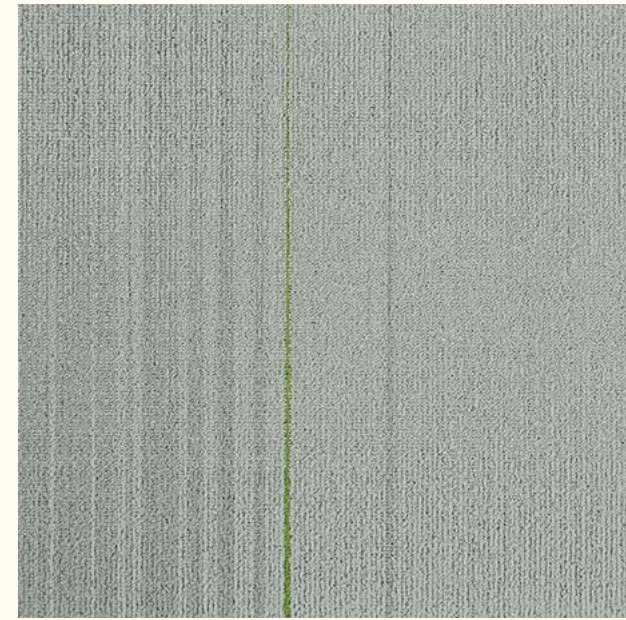
SHA188-13-6 SUN



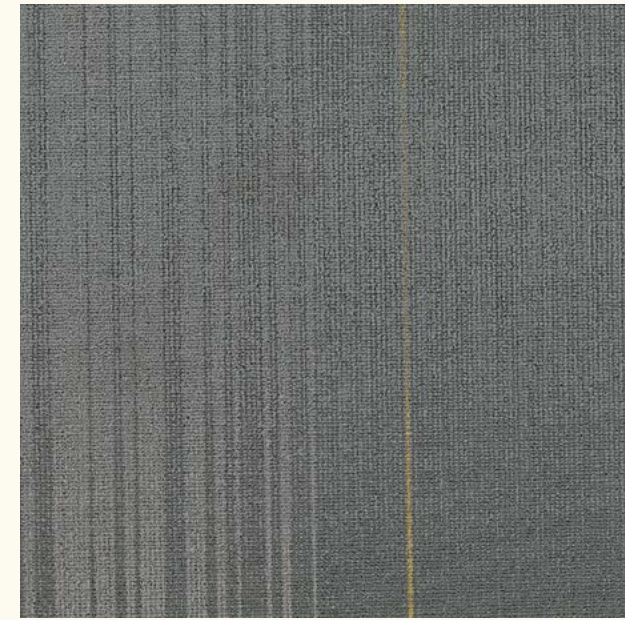
SAT13-144-188 SUN

COLORLINE

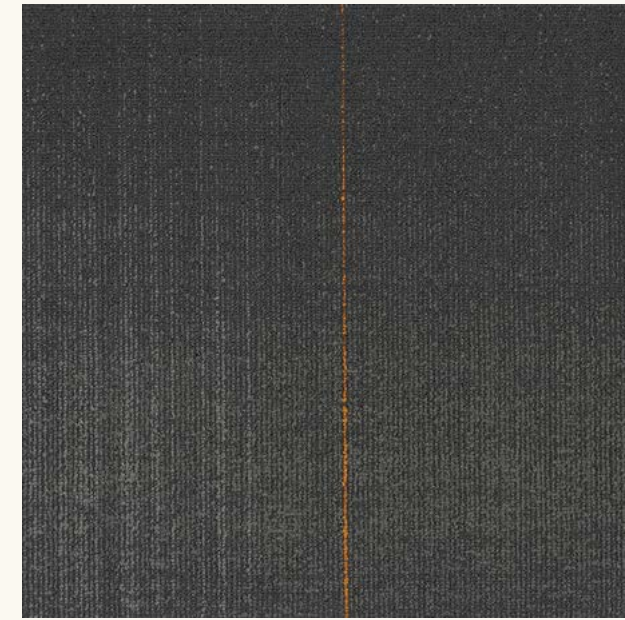
Shades



SHA141-6-144 CHARTREUSE



SHA188-13-6 SUN



SHA135-6-13 SAFFRON



SHA144-13-133 PLYWOOD

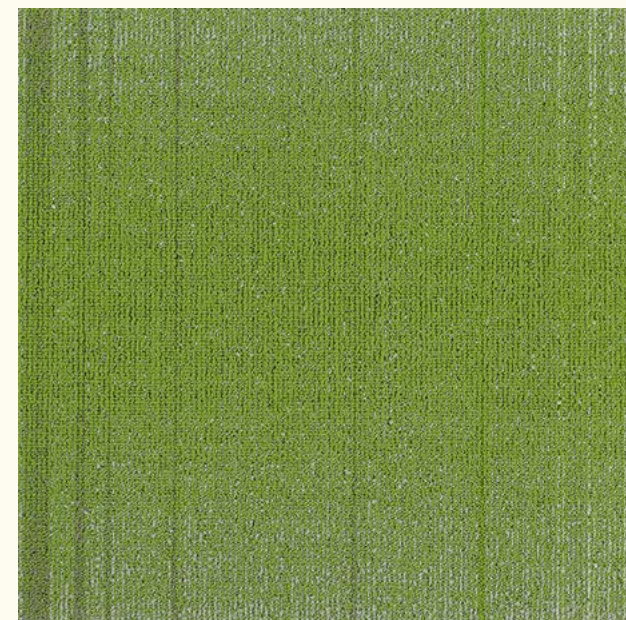


SHA197-271-251 LAGOON

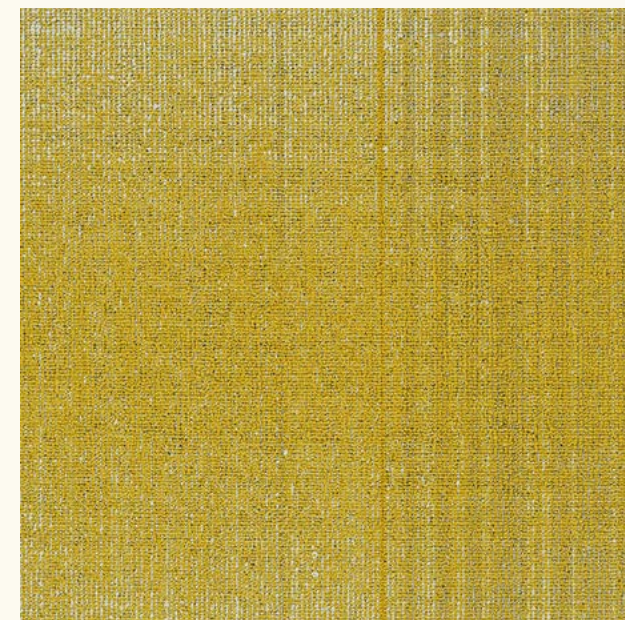


SHA200-207-44 LAKE

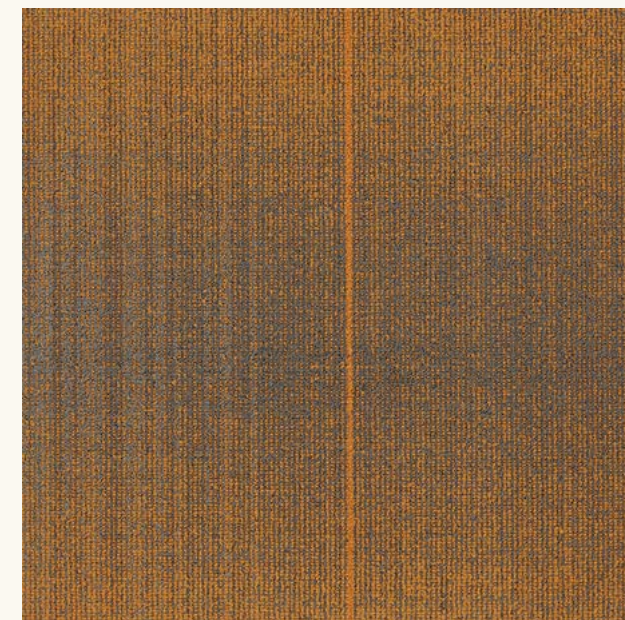
Saturates



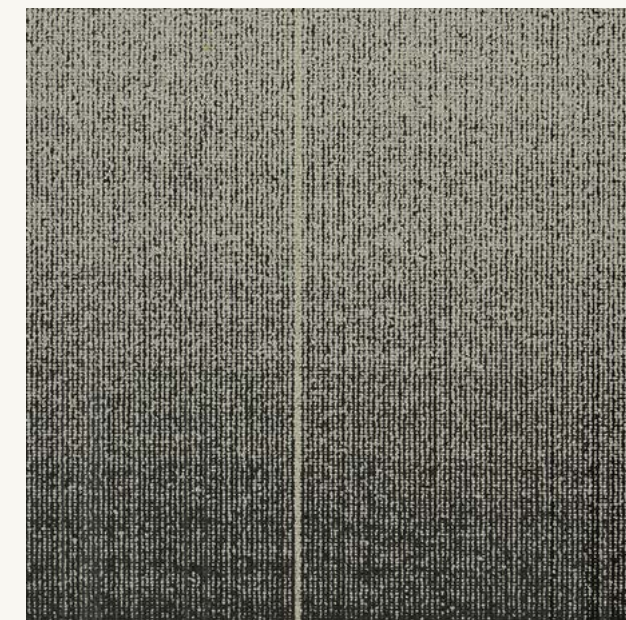
SAT6-144-141 CHARTREUSE



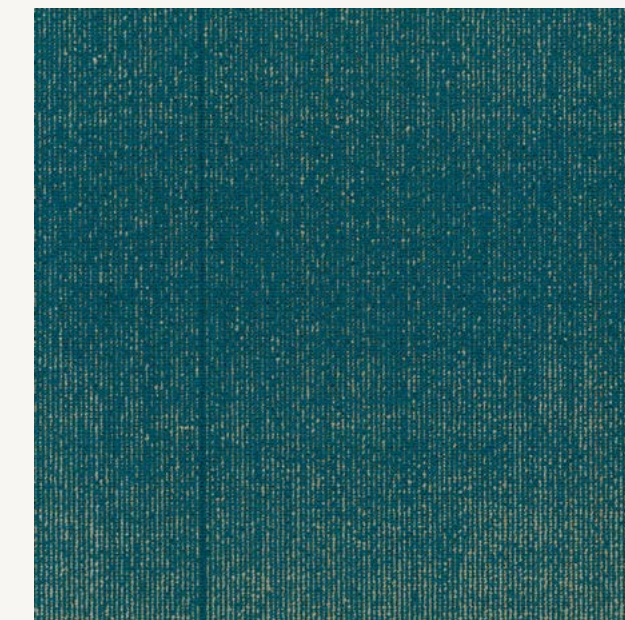
SAT13-144-188 SUN



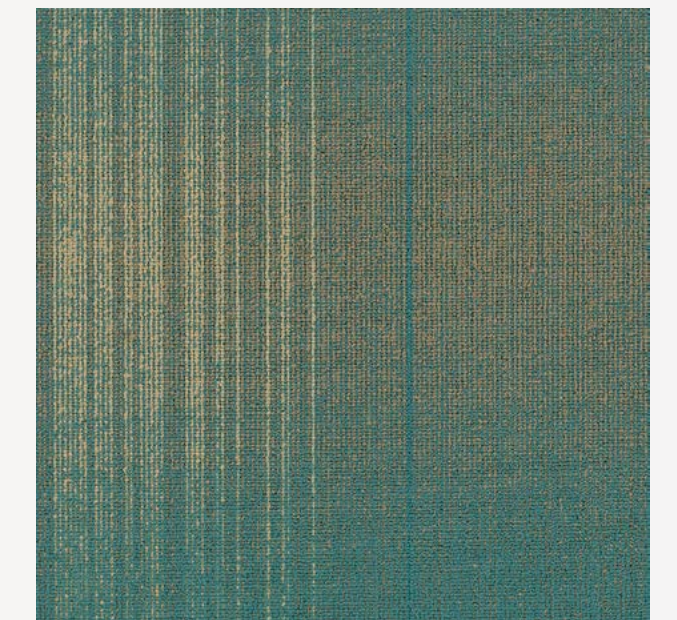
SAT144-6-135 SAFFRON



SAT133-13-144 PLYWOOD



SAT251-271-197 LAGOON



SAT44-207-200 LAKE

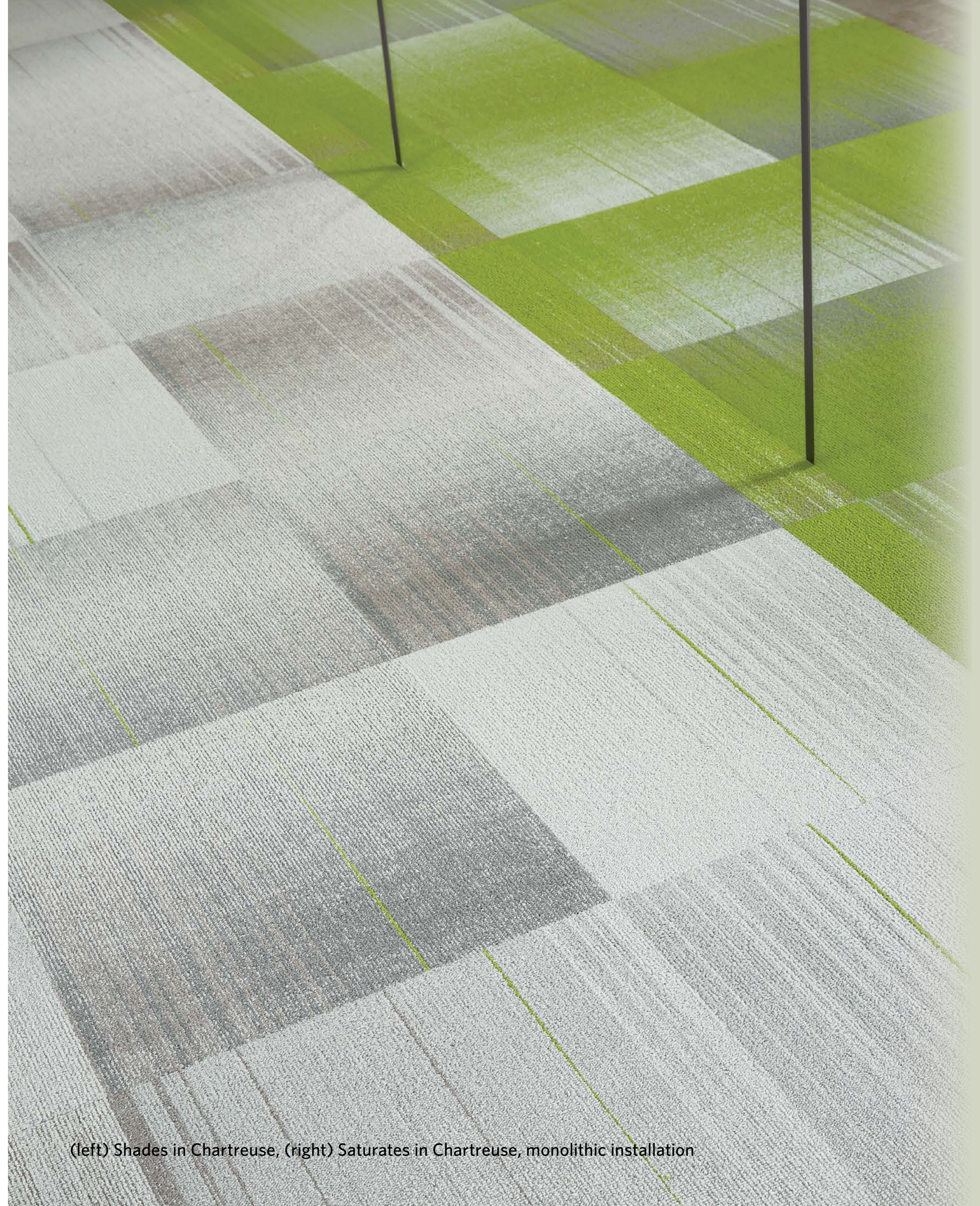
CLICK THE TILE FOR MORE COLOR INSTALLATIONS



CHARTREUSE

HUES 2.0: THE POWER OF COLOR





(left) Shades in Chartreuse, (right) Saturates in Chartreuse, monolithic installation



(left) Shades in Chartreuse, (right) Saturates in Chartreuse, monolithic installation

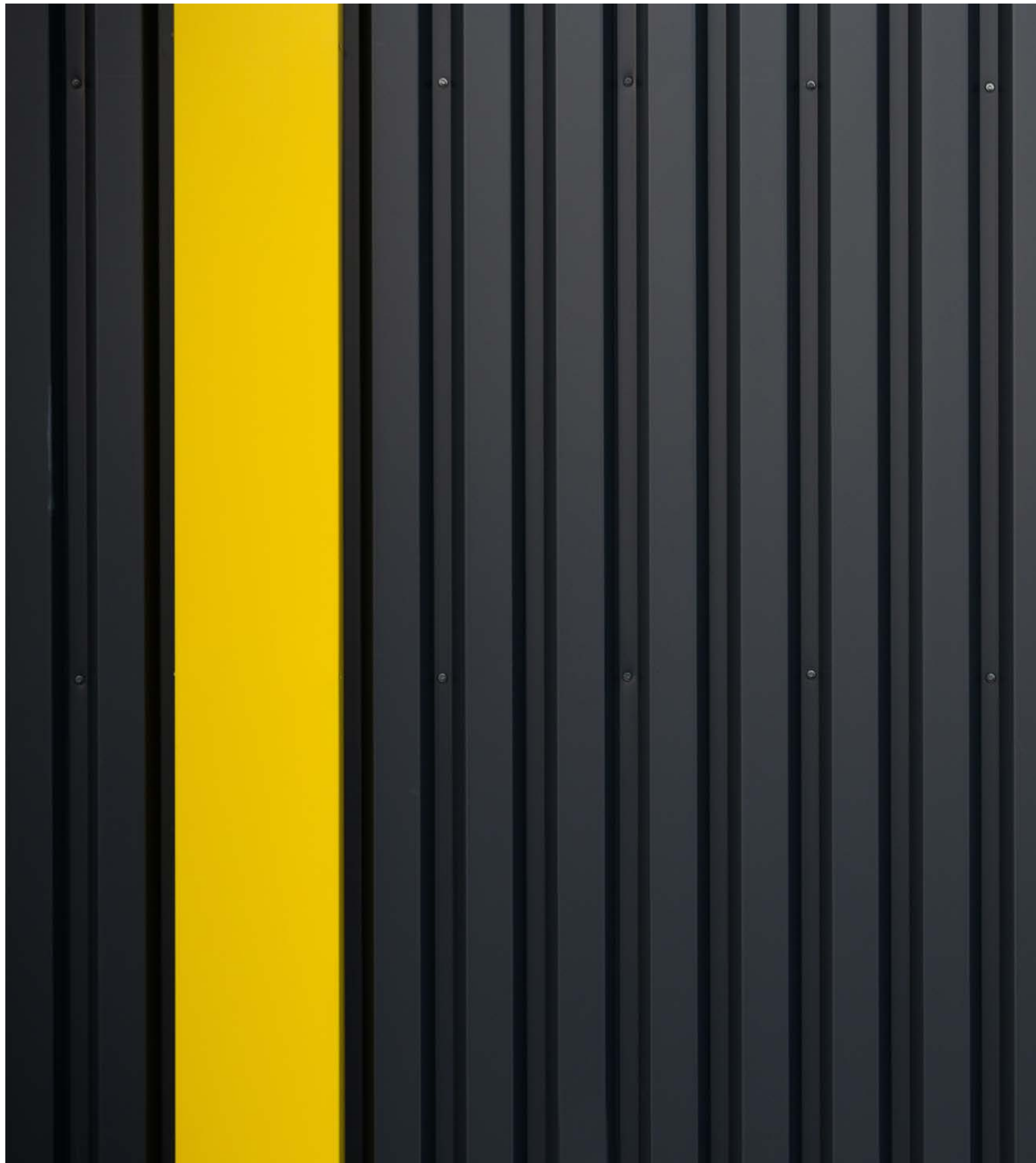


Saturates in Chartreuse, Shades in Chartreuse monolithic installation

SUN

HUES 2.0: THE POWER OF COLOR





Shades in Sun, monolithic installation



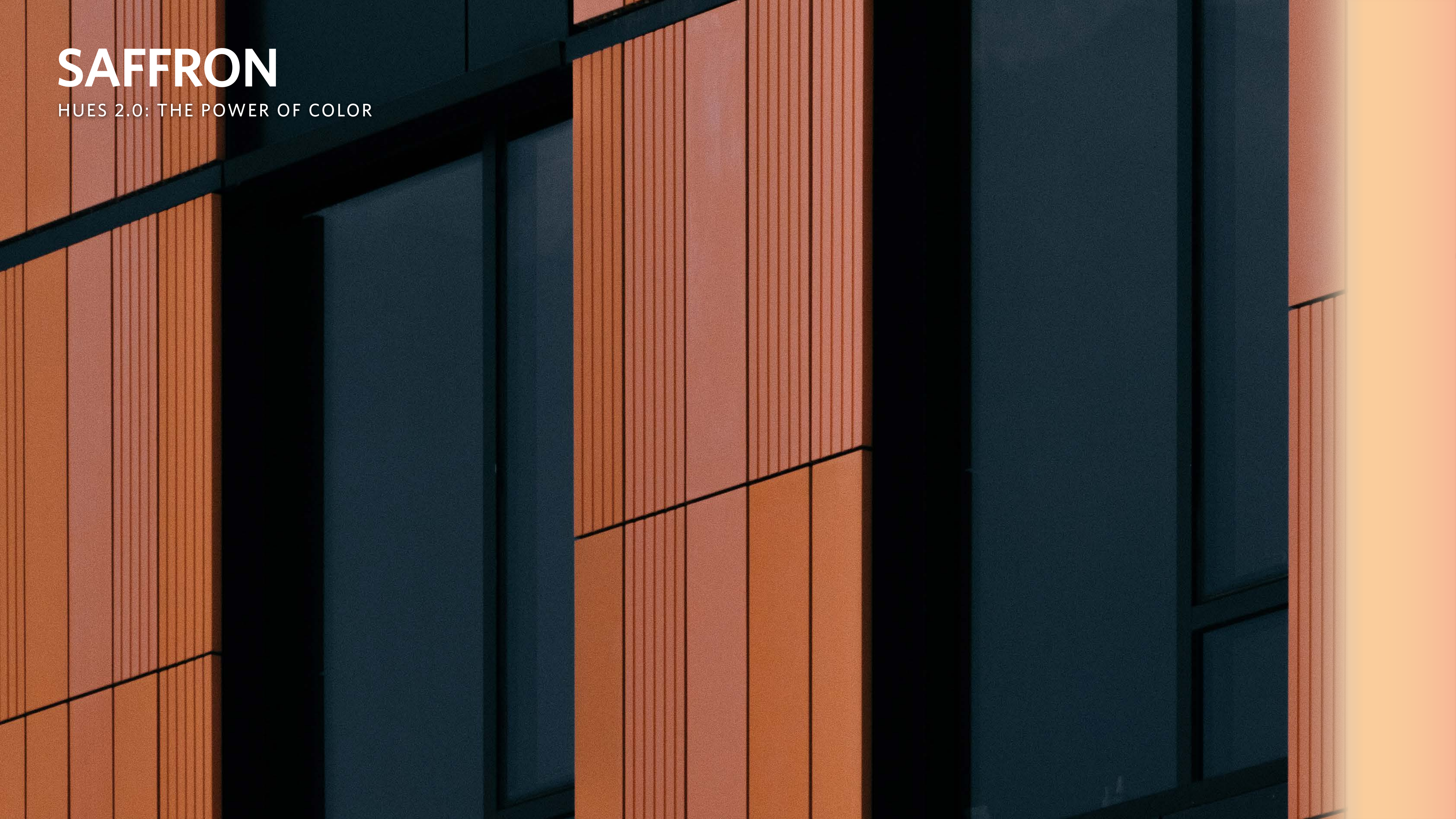
Saturates in Sun, monolithic installation



Shades in Sun, Saturates in Sun, monolithic installation

SAFFRON

HUES 2.0: THE POWER OF COLOR





Shades in Saffron, Saturates in Saffron, monolithic installation



(border) Shades in Saffron, (field) Saturates in Saffron, monolithic installation

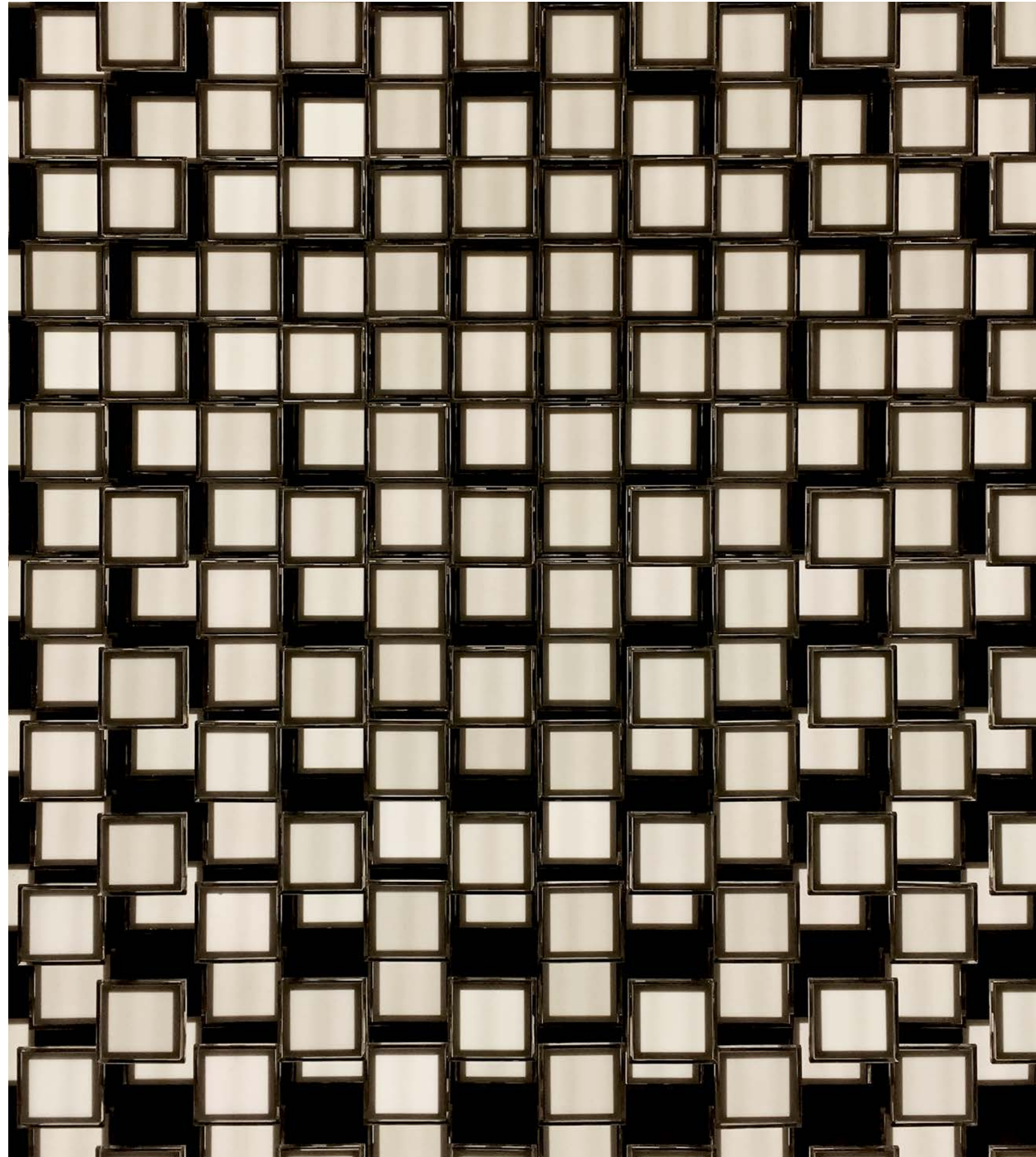


(border) Shades in Saffron, (field) Saturates In Saffron, monolithic installation

PLYWOOD

HUES 2.0: THE POWER OF COLOR





Shades in Plywood, Saturates in Plywood, monolithic installation



(corridor) Shades in Plywood. (collaboration area) Saturates in Plywood. monolithic installation

LAGOON

HUES 2.0: THE POWER OF COLOR





Shades in Lagoon, Saturates in Lagoon, monolithic installation



(corridor) Shades in Lagoon, Saturates in Lagoon, monolithic installation

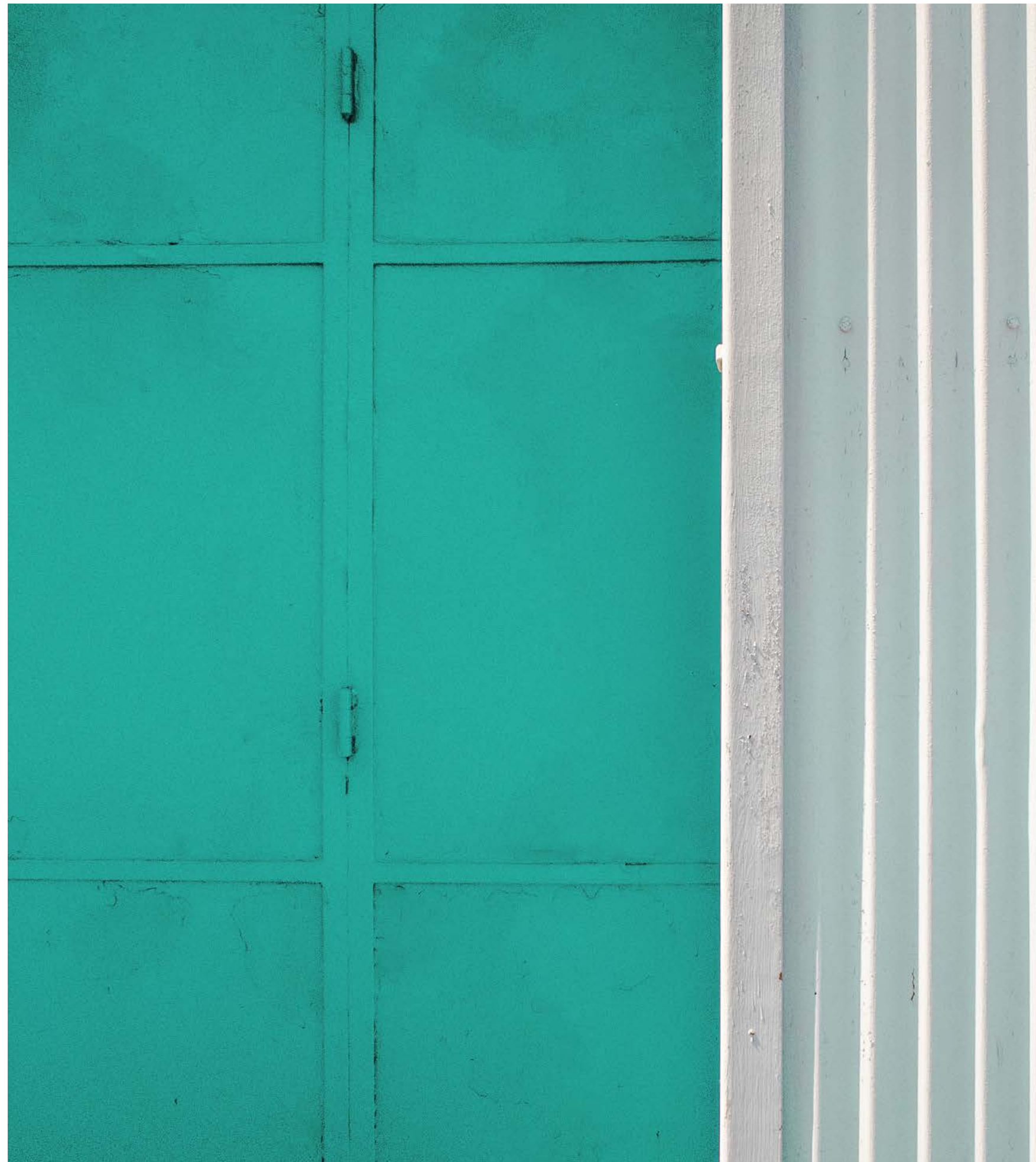


Shades in Lagoon, Saturates in Lagoon, monolithic installation

LAKE

HUES 2.0: THE POWER OF COLOR





Shades in Lake, Saturates in Lake, monolithic installation



Shades in Lake, Saturates in Lake, monolithic installation



Shades in Lake, Saturates in Lake, monolithic installation

HUES 2.0
COORDINATES



SHA200-207-44 LAKE



SHA197-271-251 LAGOON

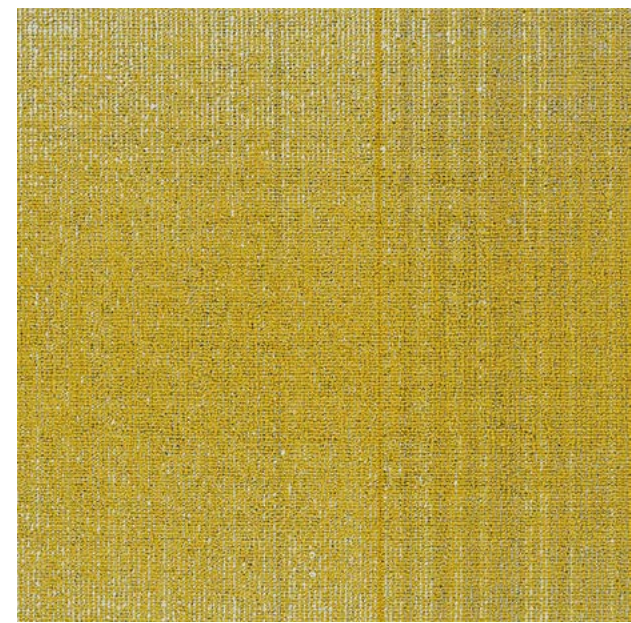


(front) Shades in Lagoon, (back) Shades in Lake, monolithic installation

HUES 2.0
COORDINATES



SHA188-13-6 SUN



SAT13-144-188 SUN



SAT6-144-141 CHARTREUSE



Shades in Sun, Saturates in Sun, Saturates in Chartreuse, monolithic installation

HUES 2.0

Construction - Tufted, Textured Loop

Tile Size - 50cm X 50 cm

Face Fiber - 100% Milliken Certified Nylon

Dye Method - Solution Dyed

Standard Backing - PVC-Free WellBAC™ Function
Available with TractionBack®

Nominal Total Thickness - 5.7 mm AVG.

Flammability - ≥ 0.45 (Class I)

Texture Appearance Retention Rating (TARR) - Heavy

Indoor Air Quality - CRI Green Label Plus™ - GLP3200, Carpet Category 14X

结构 - 簇绒织造圈绒结构

产品尺寸 - 50 厘米 X 50 厘米

表层纤维 - 100% 美利肯认证尼龙

染色技术 - 原液染色

标准底垫 - 不含 PVC 之 WellBAC™ Function 弹性底背
可选装 TractionBack® 免胶

额定总厚度 - 5.7 毫米 平均

阻燃性 - ≥ 0.45 (一级)

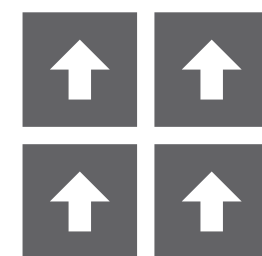
外观保持等级 (TARR) - 频繁商业使用

室内空气质量 CRI Green Label Plus™ - GLP3200, 地毯类别 14X

TractionBack®

Simplify your modular installation with Milliken's patented TractionBack®, an innovative backing system that is faster, more cost efficient, and environmentally superior to wet adhesives and peel-and-stick carpet tile.

Recommended Installation Method



Monolithic
同一方向安装



(corridor) Shades in Saffron, (collaboration area) Saturates in Saffron, monolithic installation



M/PACT™

CARBON NEUTRAL PROGRAM

HUES 2.0 IS A CARBON NEUTRAL COLLECTION

Climate change is one of the greatest threats facing humanity. Today, our carpet, LVT and entryway tiles are carbon neutral everywhere in the world. We invite you to learn more about the significant changes we've made, then let's work together to design a better future.



Milliken™

© 2022 Milliken & Company | Design © Milliken & Company

HUES 2.0

THE POWER OF COLOR



Declare.™

Images in this brochure are approximate for color and pattern scale. Please use actual samples to make your final selections.