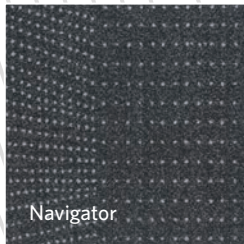


Explorer



Relief



Navigator



Regions



TOPOGRAPHY 2.0

Explorer / Relief / Navigator / Regions

Milliken

SOUTH ZONE

play
pod

QUIET ISLAND ...

100▲

200▲

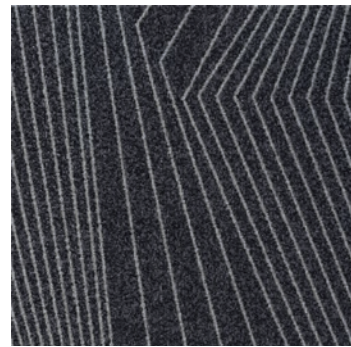
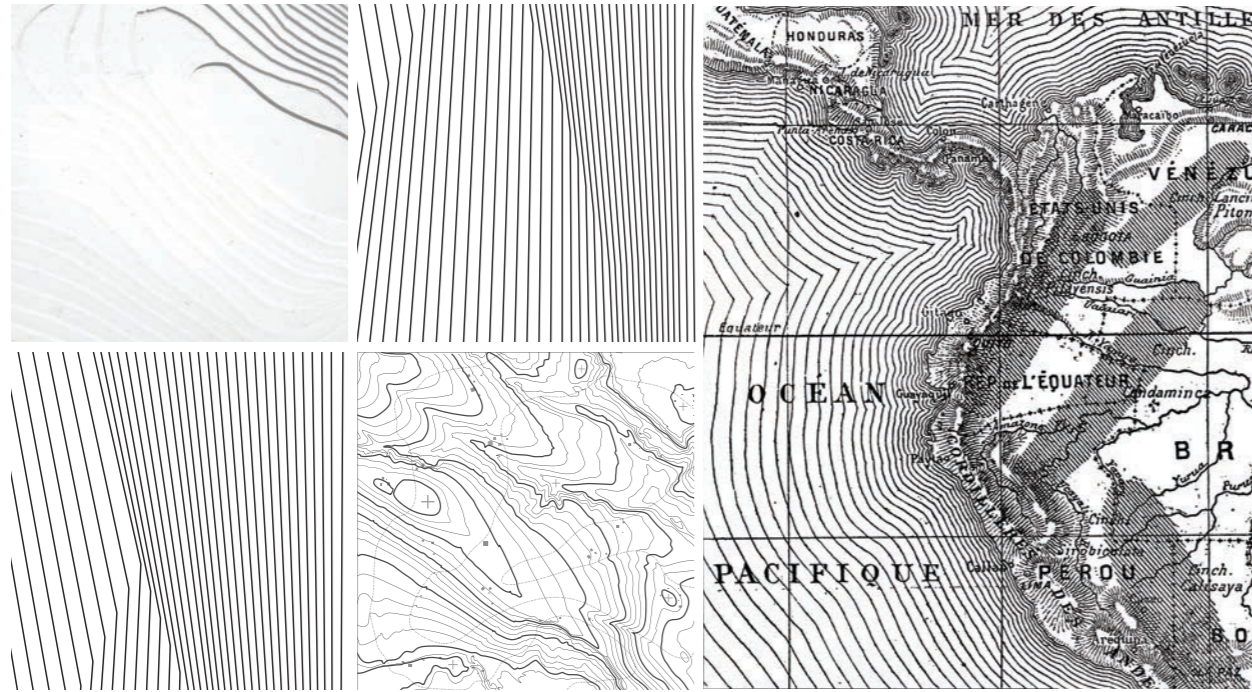
300▲

MAPPING TOOLS

Topography - Explorer

Explorer is the geometric abstraction of the organic contour lines within a topographical map.

It is a modern take on an ageless cartographic medium that is both familiar and innovative.



EXP144-119 BORDER
50cmx50cm



Explorer in Border and Relief in Custom, monolithic installation



Explorer in Elevate, Surfaces and Border, monolithic installation



Explorer in Break-line and custom, monolithic installation



Explorer in Break-line and custom, monolithic installation



EXP119-219 BREAK-LINE



CUSTOM WAYFINDING



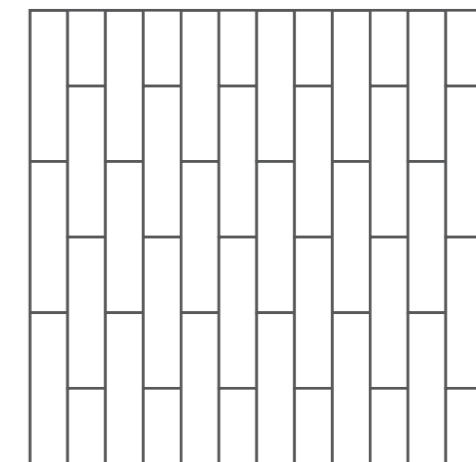
Explorer in Projection and Elevate, 50cmx1m, herringbone installation



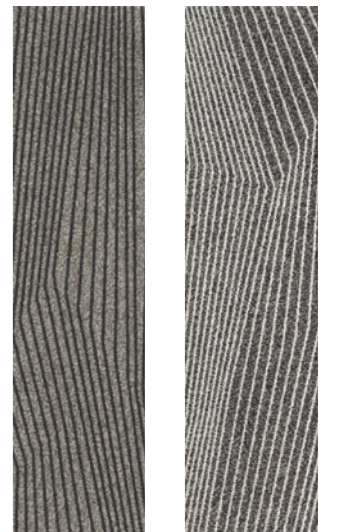
Explorer in Plans and Terrain, 25cmx1m, vertical ashlar installation



Explorer in Plans and Terrain, 25cmx1m, vertical ashlar installation



vertical ashlar



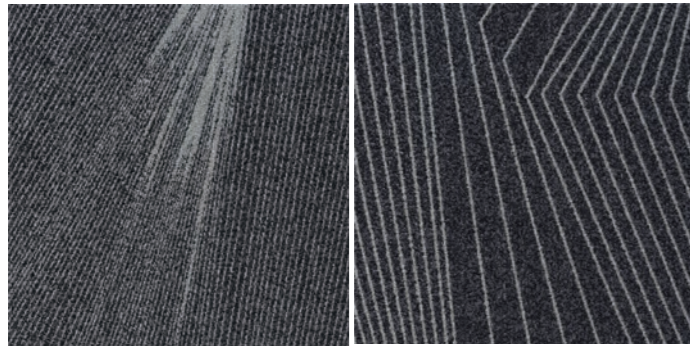
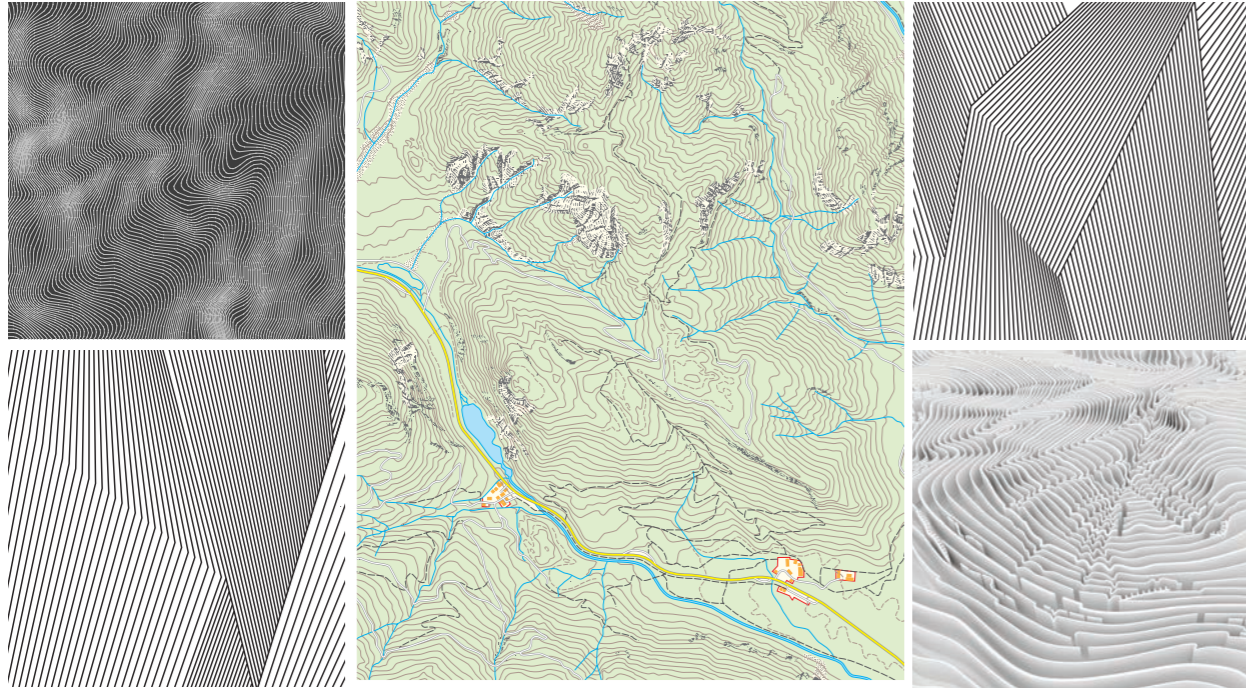
EXP133-94
PLANS
25cmx1m

EXP218-145
TERRAIN
25cmx1m

MAPPING TOOLS

Topography - Relief

Relief acts as both the antithesis and compliment to Explorer. Greater line density starts to create visual planes while emphasizing the geometry and rhythm of Explorer.



REF144-119 BORDER

EXP144-119 BORDER



Explorer and Relief in Border, monolithic installation

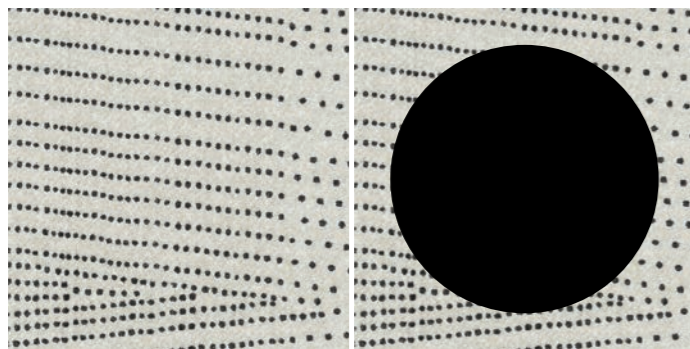
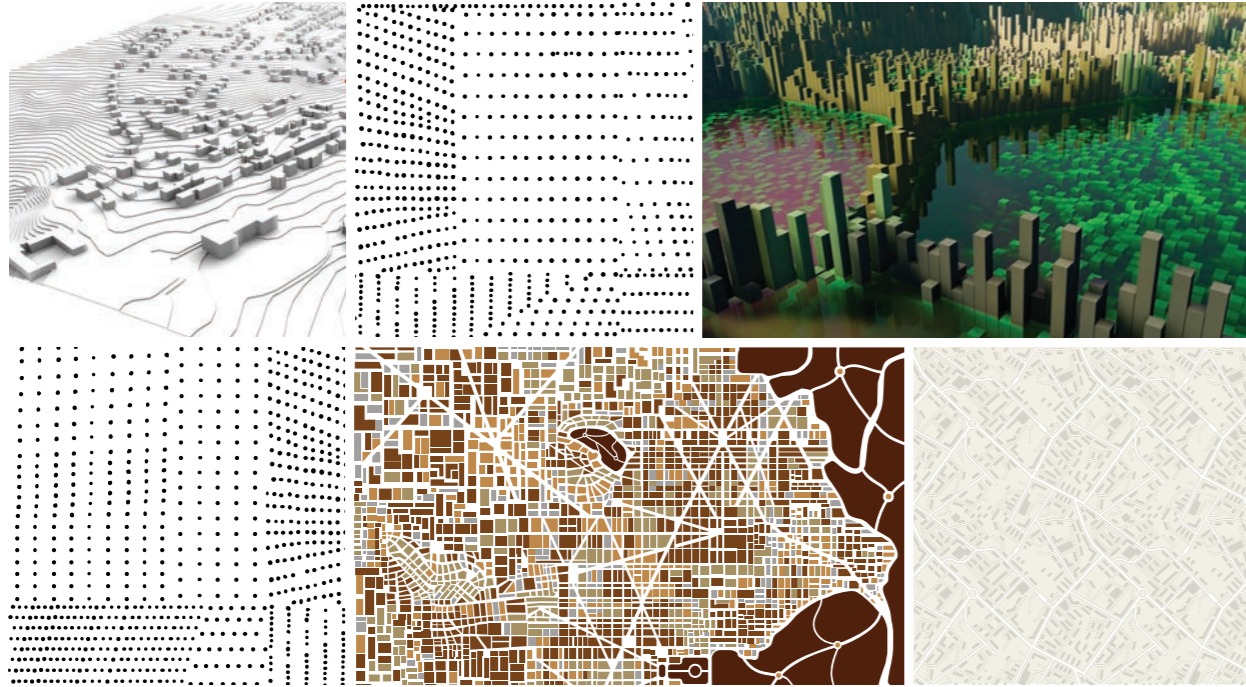


Relief in Border and Border with Azul, monolithic installation

MAPPING TOOLS

Topography - Navigator

Based on a 3-dimensional point field map, Navigator used a series of pixel points to create plane and perspective within a single tile. A combination of tiles create a dynamic terrain comprised of tilting and shifting visual planes.



NAV119-219 BREAK-LINE

CUSTOM AREA TAG



Navigator in Break line and custom, monolithic installation

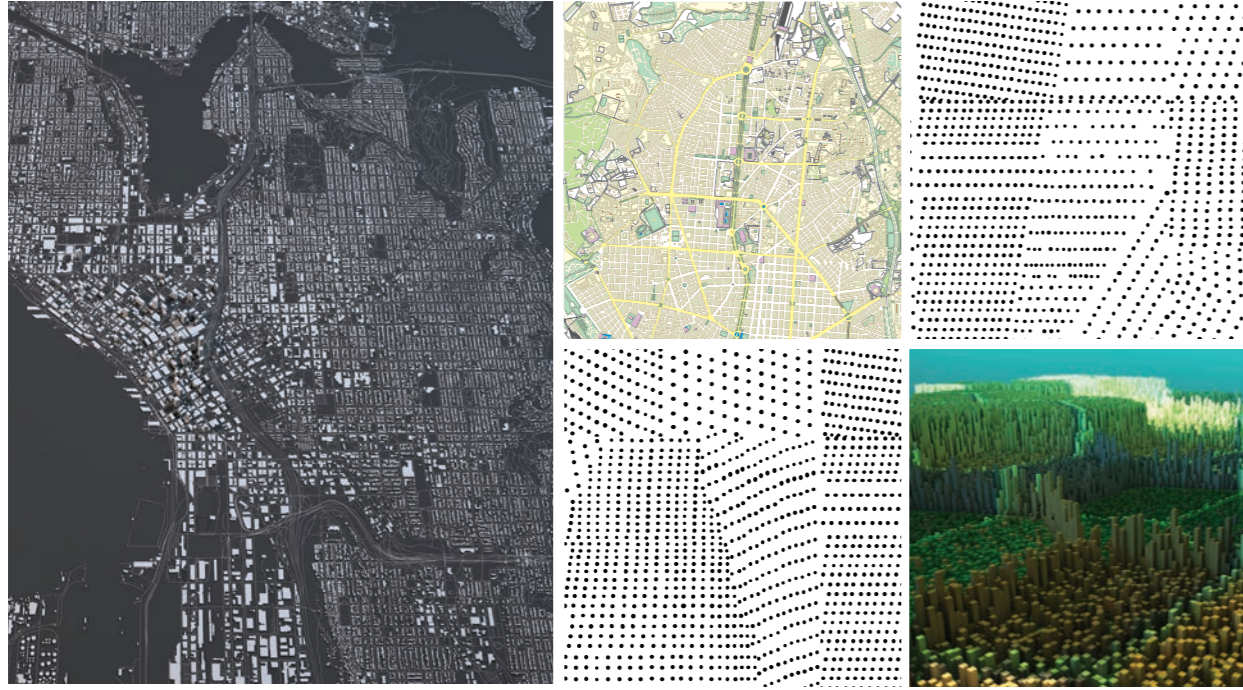


Navigator in Break-Line and Break-Line with 5cm, monolithic installation

MAPPING TOOLS

Topography - Regions

Regions shifts the scale and density of Navigator. What once felt like a textural abstraction of a 3-dimensional plan, now takes on its own unique surface quality.



NAV133-94 PLANS

REG133-94 PLANS

I WOULD LOOK BETTER ON YOUR SHELF!



Navigator and Regions in Plans, monolithic installation



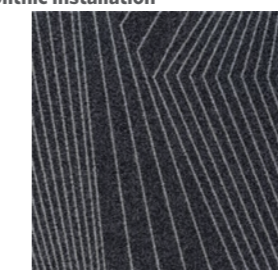
Regions in Break-Line and Break-Line with Sun, monolithic installation



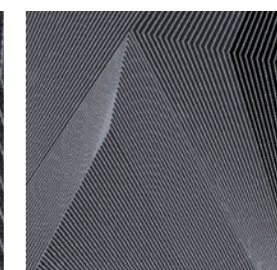
Explorer and Navigator in Border and Relief in custom, monolithic installation



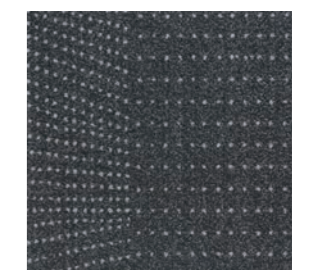
Explorer and Navigator in Border and Relief in custom, monolithic installation



EXP144-119 BORDER



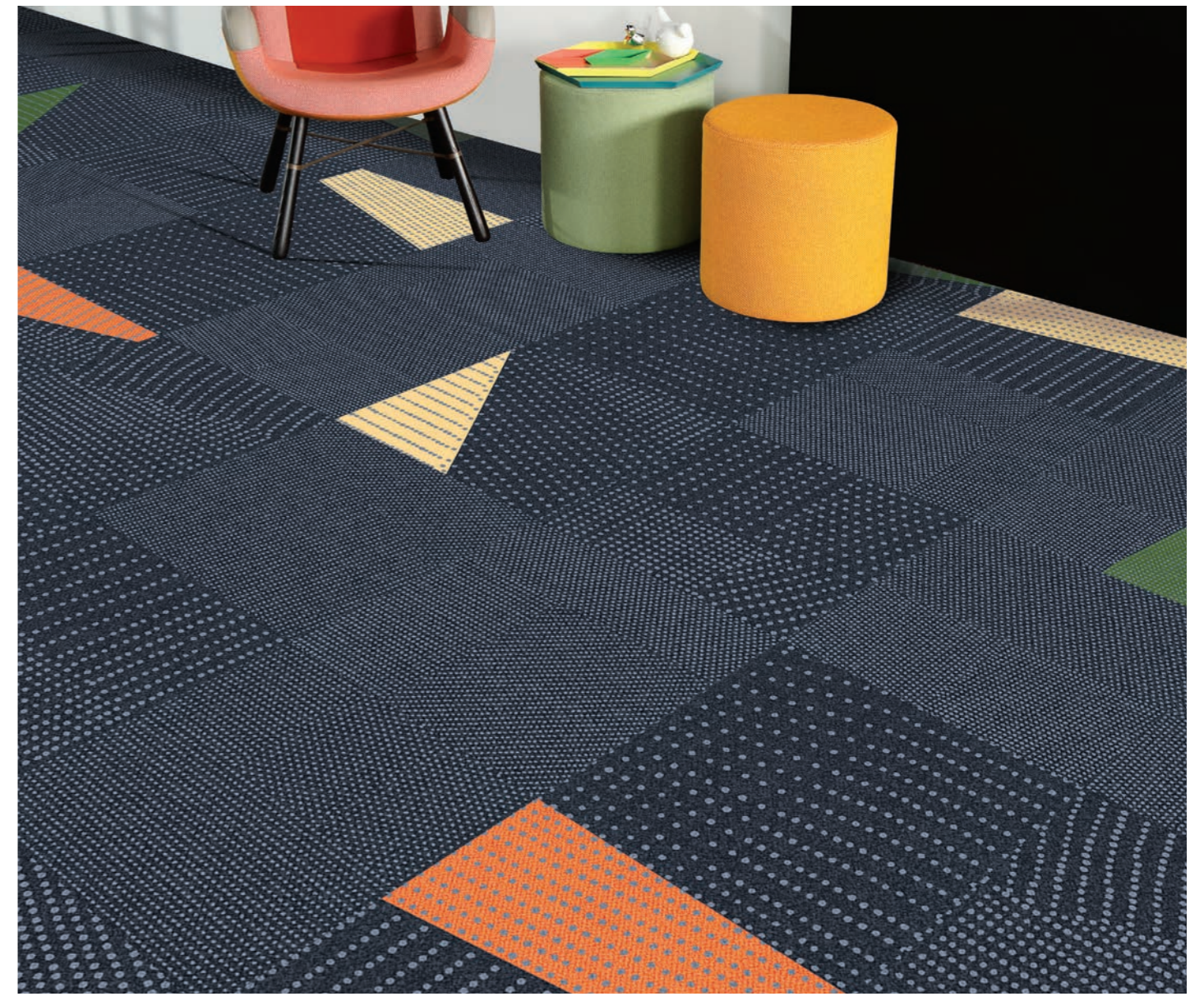
CUSTOM ZONES



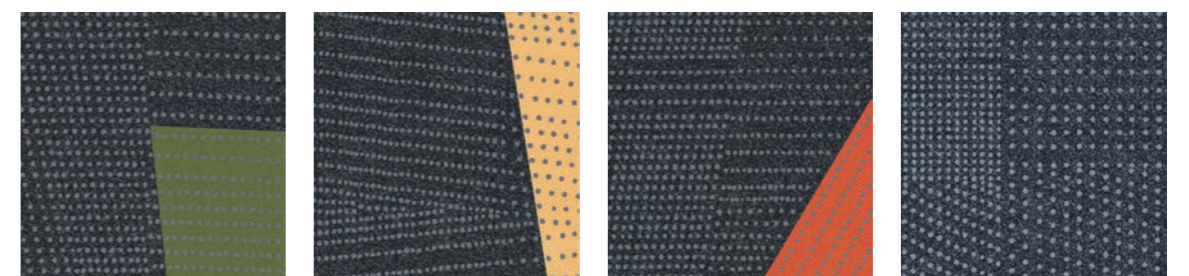
NAV144-119 BORDER



Navigator and Regions in Landform and Landform with Sun, Tangerine and Parrot, monolithic installation

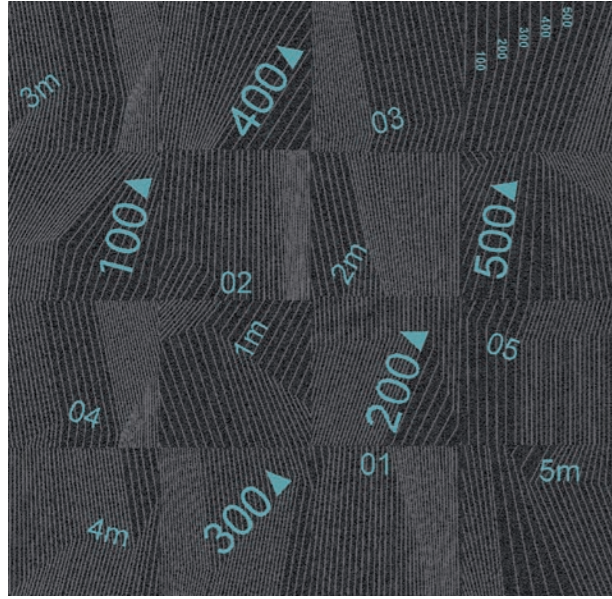


Navigator and Regions in Landform and Landform with Sun, Tangerine and Parrot, monolithic installation



NAVZ202-153-118 LANDFORM WITH PARROT	NAVZ231-153-118 LANDFORM WITH SUN	NAVZ25-153-118 LANDFORM WITH TANGERINE	NAV153-118 LANDFORM
REGZ202-153-118 LANDFORM WITH PARROT	REGZ231-153-118 LANDFORM WITH SUN	REGZ25-153-118 LANDFORM WITH TANGERINE	REG153-118 LANDFORM

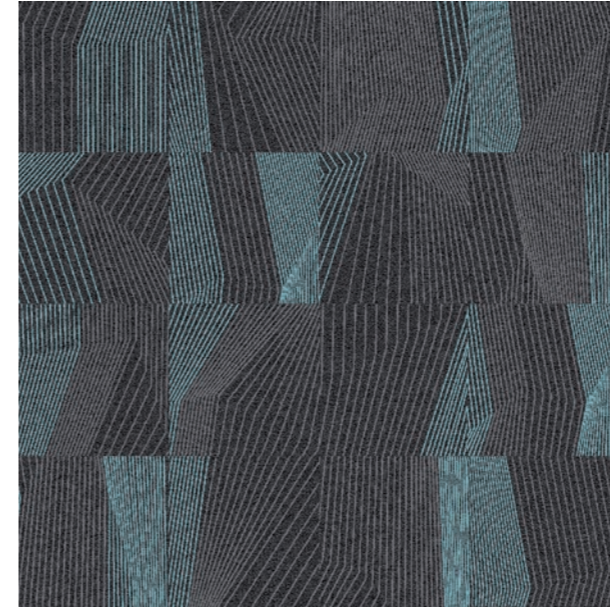
DRAWING TOOLS



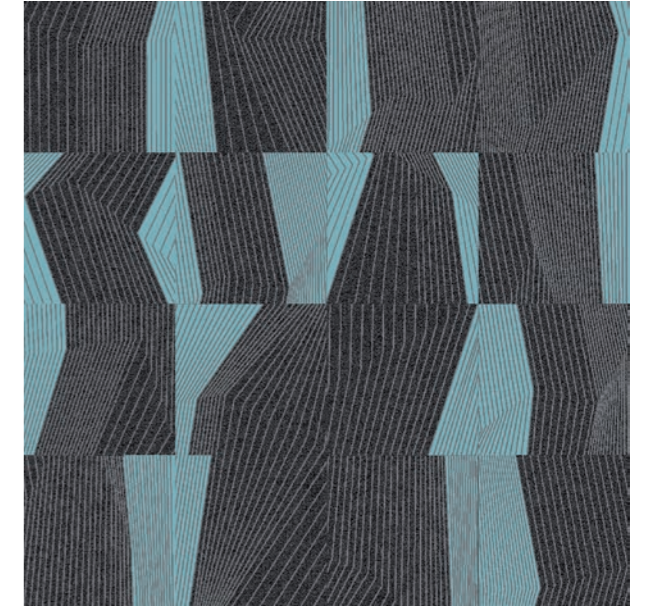
Explorer - Navigate(Custom)



Explorer - Area Tag(Custom)

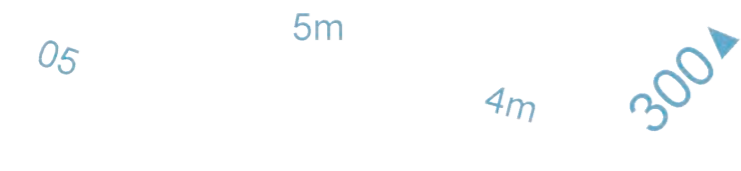


Explorer - Wayfinding



Explorer - Zones

Symbols placement options



Navigate: Number graphics (Custom)



Area Tag: Symbols (Custom)



Wayfinding: Accent Lines

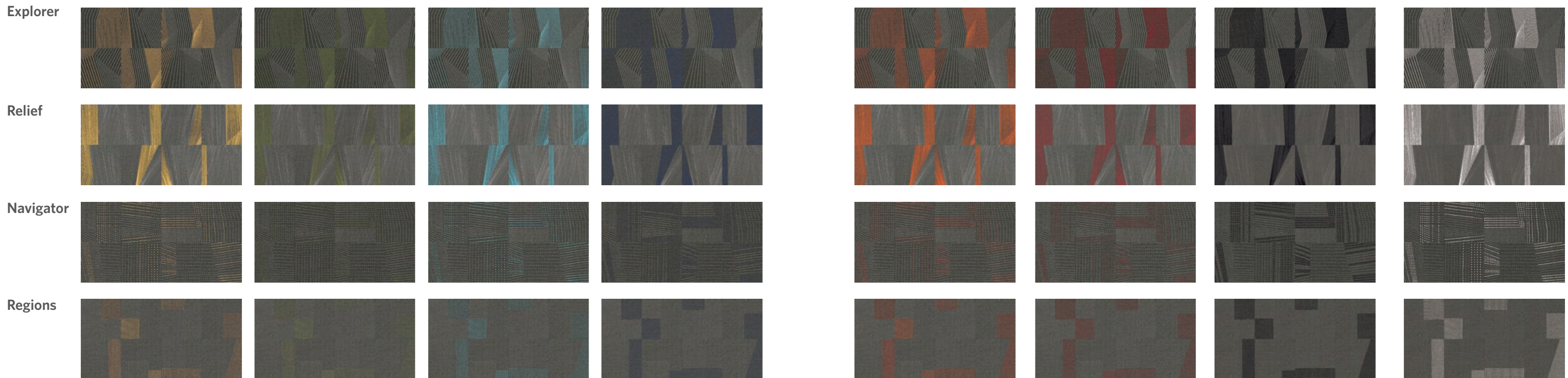


Zones: Accent Blocks

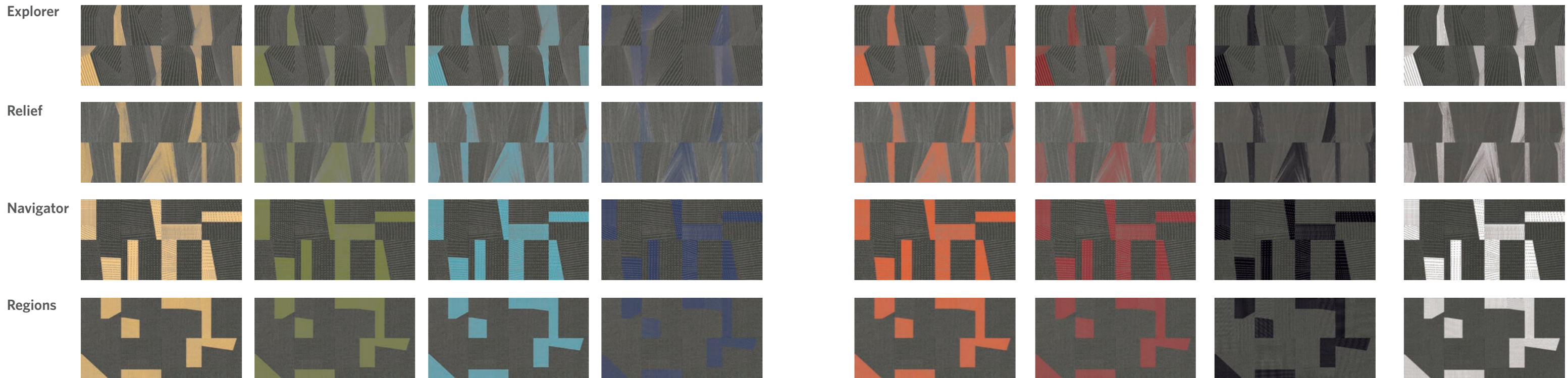
Symbols placement with Accent color options



Wayfinding

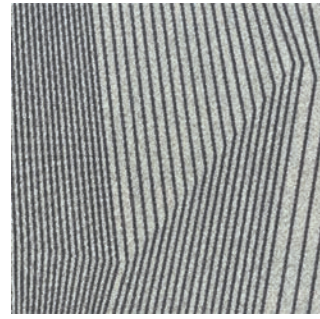


Zones

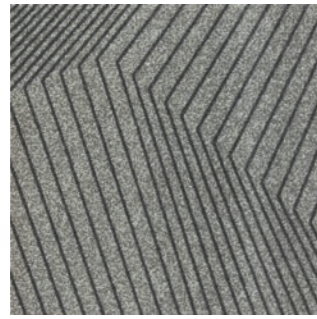


COLORLINE

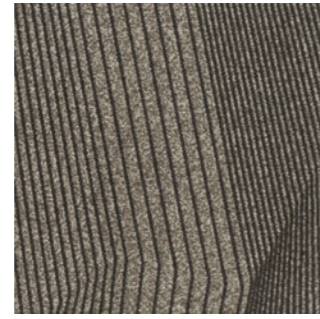
Explorer



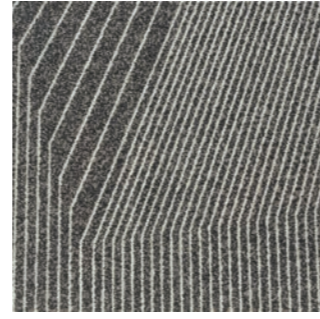
EXP154-218 PROJECTION



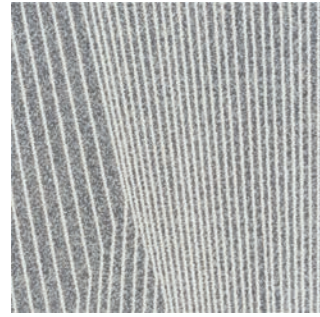
EXP119-6 MAPPING



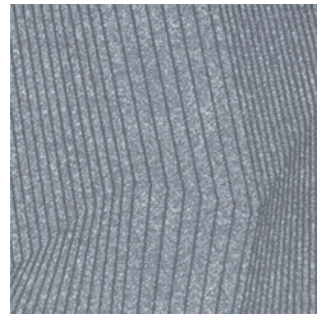
EXP133-94 PLANS



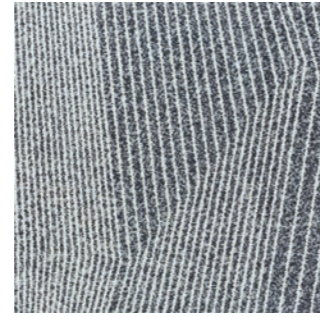
EXP218-145 TERRAIN



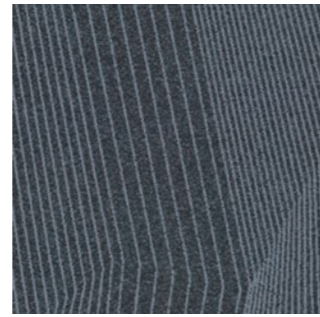
EXP219-108 ELEVATE



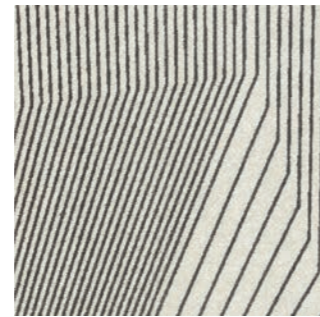
EXP13-153 GRID



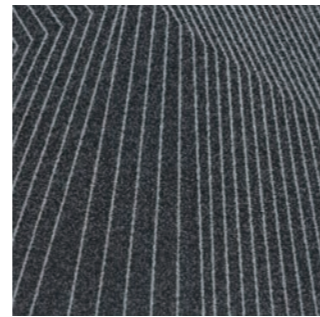
EXP219-13 SURFACES



EXP153-118 LANDFORM

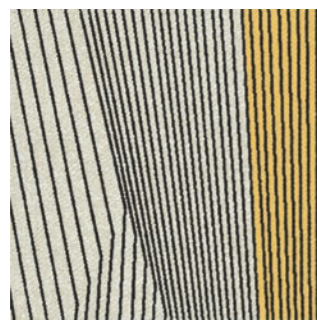


EXP119-219 BREAK-LINE

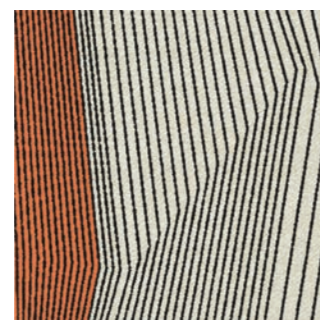


EXP144-119 BORDER

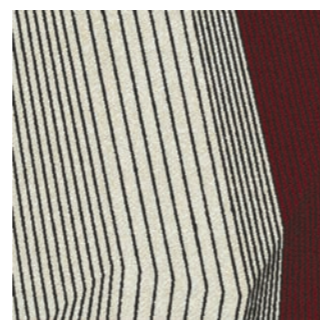
ACCENT EXAMPLES Zones



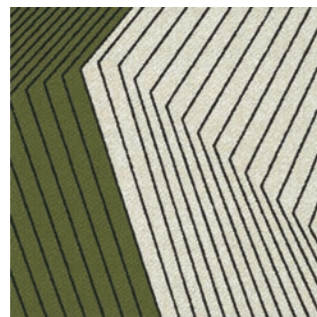
EXPZ231-119-219
BREAK-LINE WITH SUN



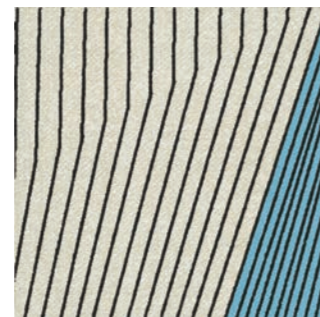
EXPZ25-119-219
BREAK-LINE WITH TANGERINE



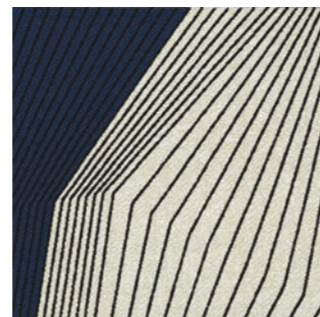
EXPZ109-119-219
BREAK-LINE WITH SCARLET



EXPZ202-119-219
BREAK-LINE WITH PARROT

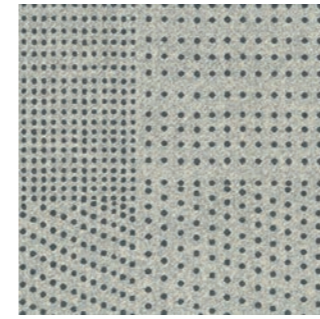


EXPZ140-119-219
BREAK-LINE WITH AZUL

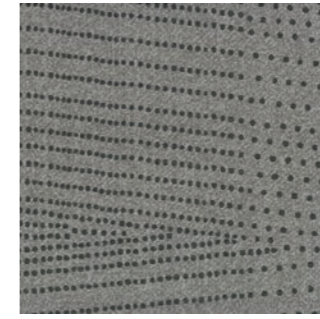


EXPZ19-119-219
BREAK-LINE WITH NAVY

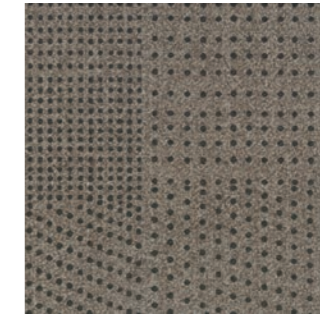
Navigator



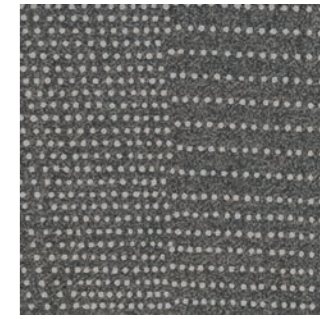
NAV154-218 PROJECTION



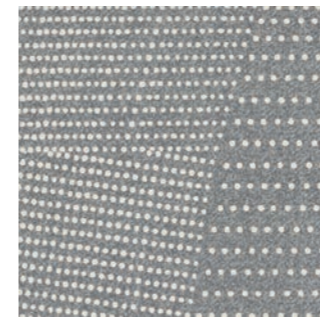
NAV119-6 MAPPING



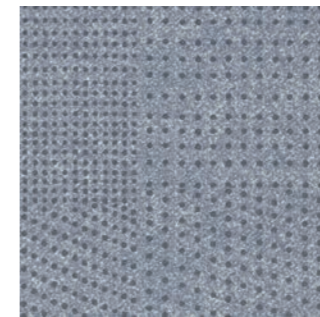
NAV133-94 PLANS



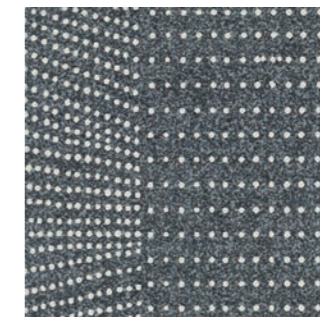
NAV218-145 TERRAIN



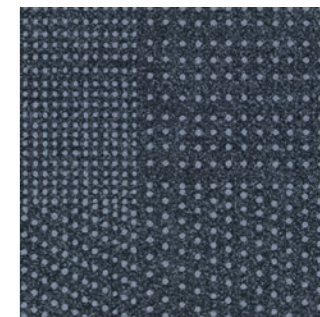
NAV219-108 ELEVATE



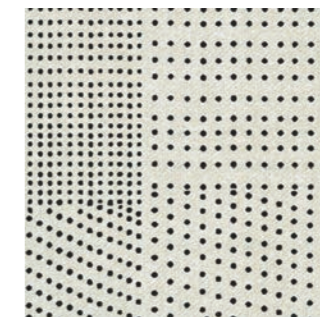
NAV13-153 GRID



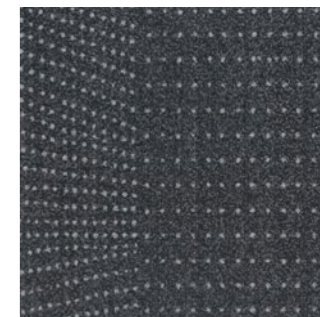
NAV219-13 SURFACES



NAV153-118 LANDFORM



NAV119-219 BREAK-LINE

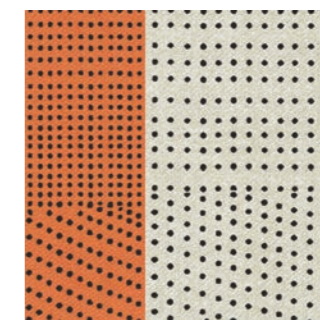


NAV144-119 BORDER

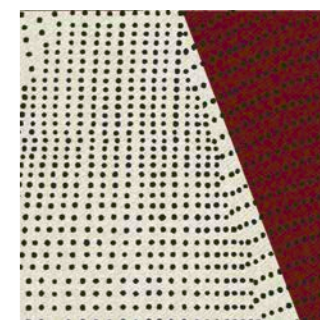
ACCENT EXAMPLES Zones



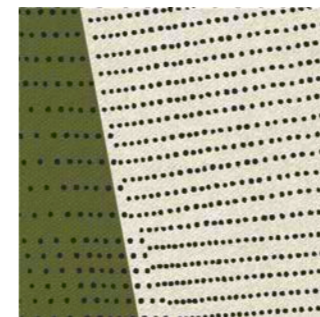
NAVZ231-119-219
BREAK-LINE WITH SUN



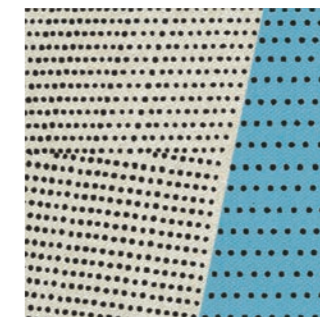
NAVZ25-119-219
BREAK-LINE WITH TANGERINE



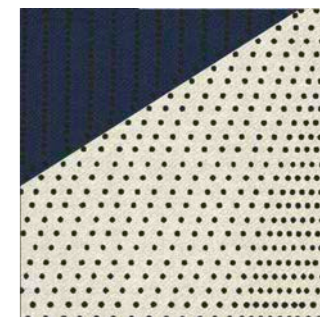
NAVZ109-119-219
BREAK-LINE WITH SCARLET



NAVZ202-119-219
BREAK-LINE WITH PARROT



NAVZ140-119-219
BREAK-LINE WITH AZUL



NAVZ19-119-219
BREAK-LINE WITH NAVY

Topography 2.0

Explorer / Relief / Navigator / Regions

SPECIFICATION

Construction - Tufted, Textured Loop
Tile Size - 50cm X 50cm (19.7" X 19.7")
Face Fiber - 100% Milliken Certified Nylon
Dye Method - Millitron®
Standard Backing - PVC-Free WellBAC™ Comfort
Available with TractionBack®
Nominal Total Thickness - 8.5 mm AVG.
Stain Repel/Stain Resist/Soil Release - StainSmart®
Flammability - ≥ 0.45 (Class I)
Texture Appearance Retention Rating (TARR) - Severe
Indoor Air Quality - CRI Green Label Plus™
GLP3237, Carpet Category 5Y

技术指标

结构 - 簇绒织造圈绒结构
产品尺寸 - 50厘米 X 50厘米 (19.7 X 19.7英寸)
表层纤维 - 100% 美利肯认证尼龙
染色技术 - Millitron® 电脑数码针染
标准底垫 - 不含PVC之 WellBAC™ Comfort 舒适软底
可选装 TractionBack® 免胶
额定总厚度 - 8.5 毫米 平均
抗污/防污/去污 - StainSmart®
阻燃性 - ≥ 0.45 (一级)
外观保持等级 (TARR) - 重度商业使用
室内空气质量 CRI Green Label Plus™ - GLP3237, 地毯类别 5Y

Installation Method

安装方式:



Monolithic
同一方向安装

TractionBack®

Simplify your modular installation with Milliken's patented TractionBack®, an innovative backing system that is faster, more cost efficient, and environmentally superior to wet adhesives and peel-and-stick carpet tile.

www.millikencarpet.com



Declare.

China
North & North West &
South West Of China
T +86 10 6465 1206
T +86 133 0101 8460
South of China &
HK & Macau
T +86 181 1743 0032
East & Central of China
T +86 21 6145 1758

India
Bangalore
T +91 98408 98963
Delhi
T +91 95010 11800
Hyderabad
T +91 99631 64059
Mumbai
T +91 98926 00362

Rest of Asia
Manila
T +63 915 816 7127
Seoul
T +82 2 3783 0747
Singapore
T +65 6593 1301
Tokyo
T +81 3 5203 8406
Jakarta
T +6221 2960 7222