



# DEKO PF

Profile Free System Partition





## DEKO PF - The Alternative to Conventional Drywalls

Even though glazed partitions have become a constituent part of contemporary fitting out, the demand for system partitions with discrete detailing is increasing.

DEKO PF is a profile free system partition which is constructed in the same way as DEKO PV with the slim aluminum profiles being replaced with a discrete pencil line or bevel edge joint, giving the partition a minimalistic appearance.

DEKO PF is flexible and functional and can be adapted to suit the requirements of all types of buildings.

DEKO PF is the perfect choice where minimal detailing is important: it is a ready-made partition giving desirable strength and stability ratings. In addition, it is easily installed and is price competitive.

The component parts of DEKO PF are reusable, and matching glazed partitions or doors can be incorporated both during the initial installation and retrospectively. Alterations can be completed with little disruption to surrounding finishes.



## Detailed Design - Ready to Install

DEKO system partitions have been installed worldwide for many years. This success is due to the flexibility and availability and competitive service provided by DEKO.

DEKO PF is supplied as a ready-made drywall finished with discrete joints forming the vertical joints of the gypsum boards, which gives the partition an attractive finish.

DEKO PF consists of individual components based on a steel framework, which is concealed with pre-treated gypsum boards.

The cavity between the gypsum boards is filled with mineral wool. The facing gypsum board is fastened to the steel framework with specially developed concealed clips.

As in conventional drywalls, cables and other installations can be incorporated within the partition. Sockets and accessories such as shelves, boards, pictures, and whiteboards can be attached directly to the partition.

## A Wide Variety of Surface Finishes

DEKO PF is used in a wide variety of interiors. All gypsum boards are pre-decorated with paint, wallpaper surfaces.

Using pre-treated gypsum boards offers significant time savings during the construction phase, as conventional drywalls normally need to be painted after installation.

Sheet metal, wood veneer, melamine, or laminate can also be used as surface finishes according to specific project requirements.

## Doors and Glazed Modules

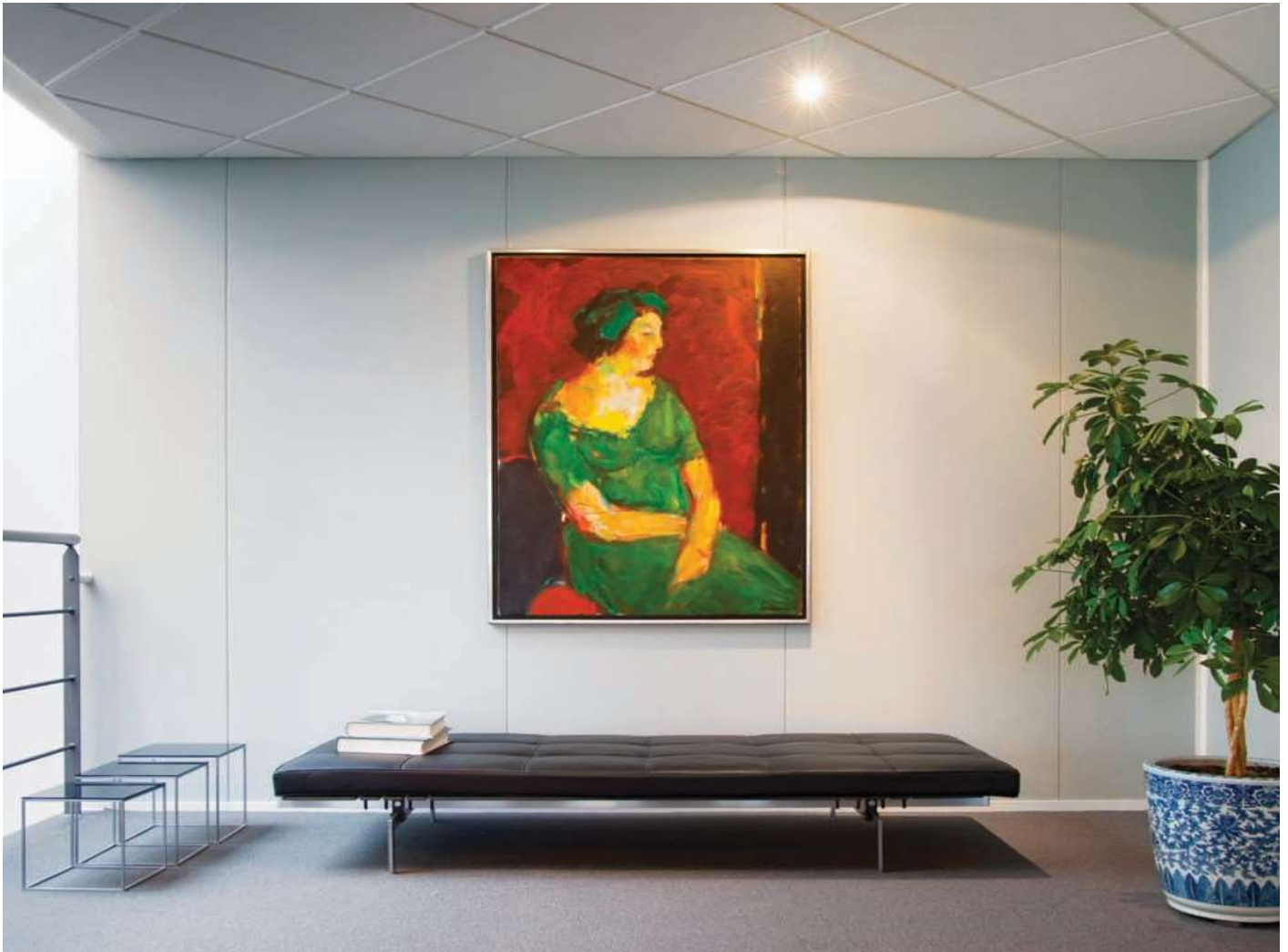
We produce glazed modules (DEKO GV) and doors, so that the same construction methods can be used for installing doors and glazed elements in DEKO PF system partitions.

DEKO Doors are installed in the unique DEKO aluminum frame. Doors can be solid, glazed, or fully glazed, and can offer sound and fire ratings.

## Skirting and Architrave Details

DEKO PF partitions are constructed with slim aluminum profiles at floor, ceiling, doors, glazed modules, and other joint details.

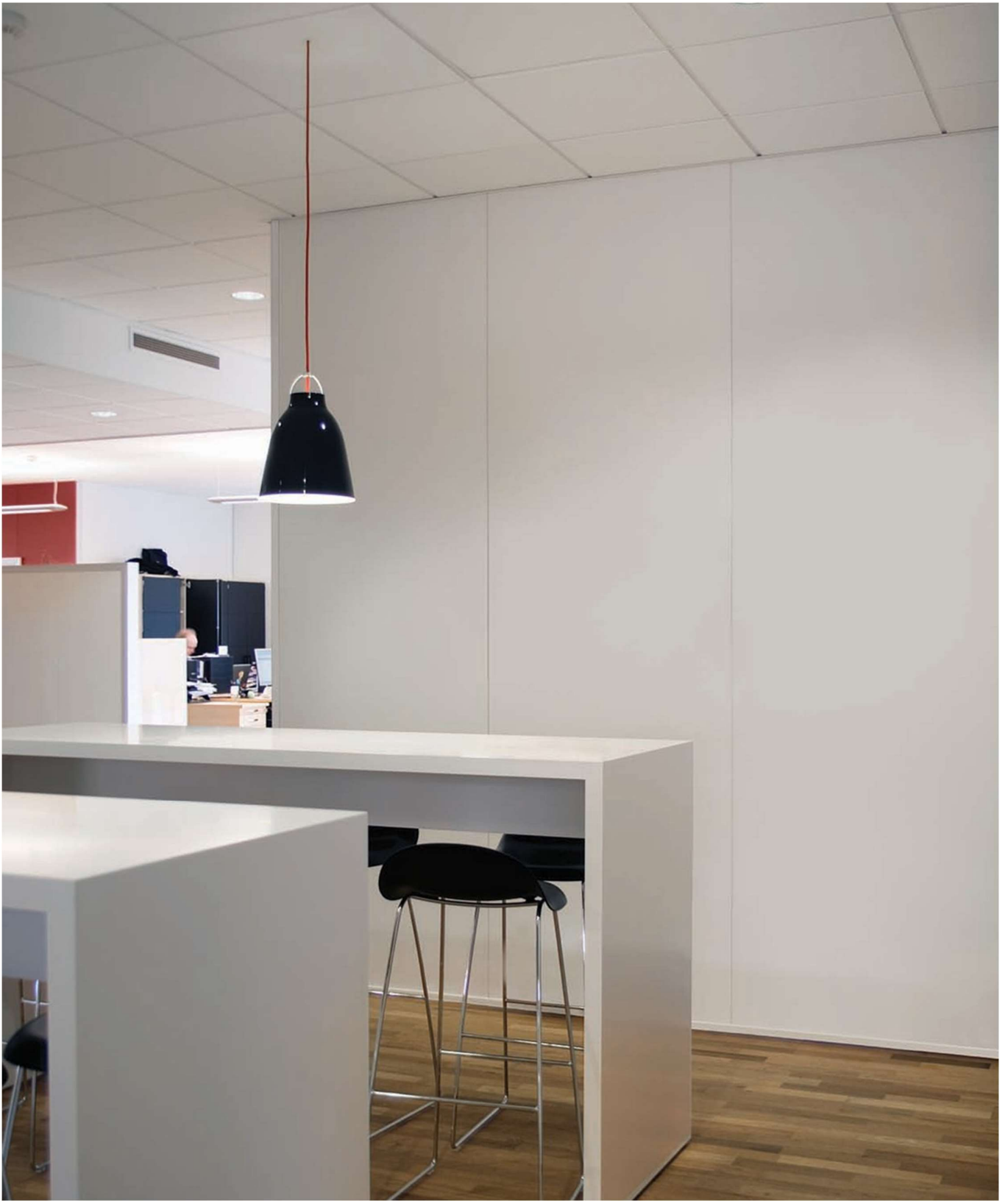




## Creating Safe Working Environments

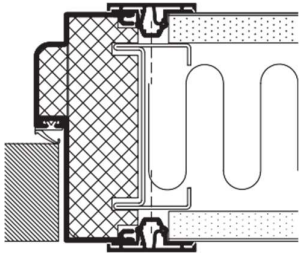
DEKO system partitions with matching doors and glazed modules are constantly tested and developed in order to ensure compliance with the latest national and international standards for sound reduction, fire resistance, and indoor climate.

DEKO PF 1090 system partitions are fire tested up to 30 minutes and sound tested up to Rw 44 dB. Fire and sound technical qualities can be found on DEKO's ETA-approval.

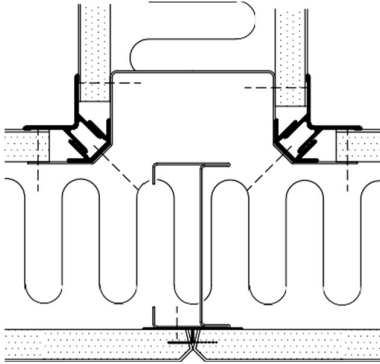


**DEKO partitions India LLP.**  
# 300, Shankaran Complex,  
Langford Road, Shanti Nagar,  
Bangalore - 560025  
Tel No - 08022279000

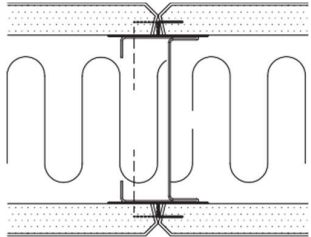
# Details for DEKO PF



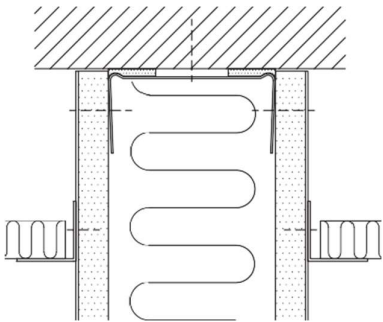
Solid door



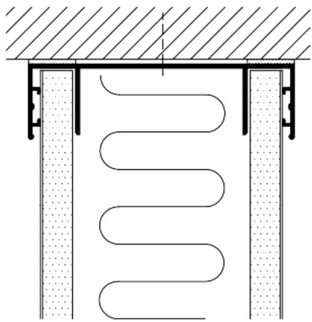
T-connection



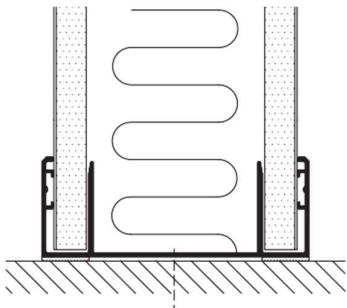
Gypsum board joint type 1090



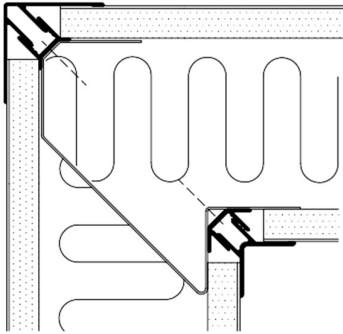
Suspended ceiling connection



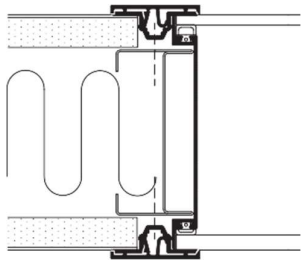
Fixed ceiling connection



Floor connection



90° corner



Gypsum board/glass joint

## Type Summary

| Type    | Partition Thickness (mm) | Lining Gypsum Board (Number) | Weight (kg/sqm) | Insulation (mm) | Airborne Sound Insulation (Rw) | Airborne Sound Insulation (Rw) | Fire Resistance |
|---------|--------------------------|------------------------------|-----------------|-----------------|--------------------------------|--------------------------------|-----------------|
| PF 1090 | 107                      | 2 x 13 mm                    | 25              | 50              | 42 dB                          | 39 dB                          | EI30            |